

Elementare Musiklehre 1

Blockflöte

Lehrstoff und Übungen

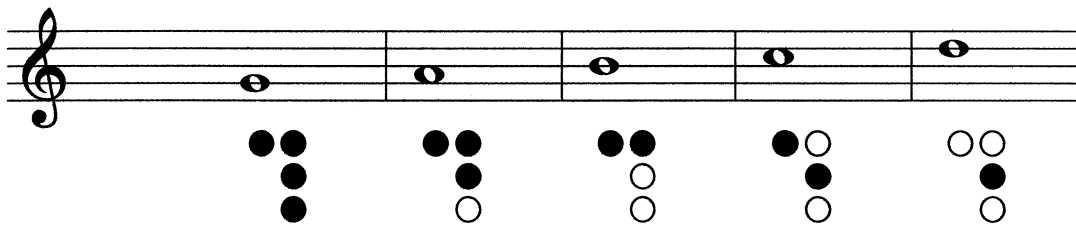
1./2. Gehörbildung:

Tonhöhe

Tondauer

3. Notenschlüssel

4./5. Noten und Griffe



6. Notenhälsen

7. Notenwerte / Taktstriche



8. Rhythmus hören

EML 1 Alter: ca. 5 - 7 Jahre

Der Lehrstoff für die EML ist bewusst einfach gehalten und verzichtet auf erklärende Texte, besteht vorwiegend aus Übungen und soll den ersten Umgang mit dem Notenlesen und der Notenschrift vermitteln. Die Übungen können begleitend zu einem Musiktheoriekurs, aber auch von den InstrumentallehrerInnen ergänzend im Hauptfachunterricht verwendet werden. Da die EML nicht aufbauend konzipiert ist, kann je nach Instrument, Alter und geistiger Reife in jede Stufe eingestiegen werden.

Übungen zur Gehörbildung

Stelle fest, ob der jeweils 2.Ton höher oder tiefer ist als der erste!

Beispiel 1: höher tiefer

Beispiel 2: höher tiefer

Stelle fest, ob der jeweils 2.Ton länger oder kürzer ist als der erste!

Beispiel 1: länger kürzer

Beispiel 2: länger kürzer

Übungen zur Gehörbildung

Stelle fest, ob der jeweils 2.Ton höher oder tiefer ist als der erste!

Beispiel 1: höher tiefer

Beispiel 2: höher tiefer

Stelle fest, ob der jeweils 2.Ton länger oder kürzer ist als der erste!

Beispiel 1: länger kürzer

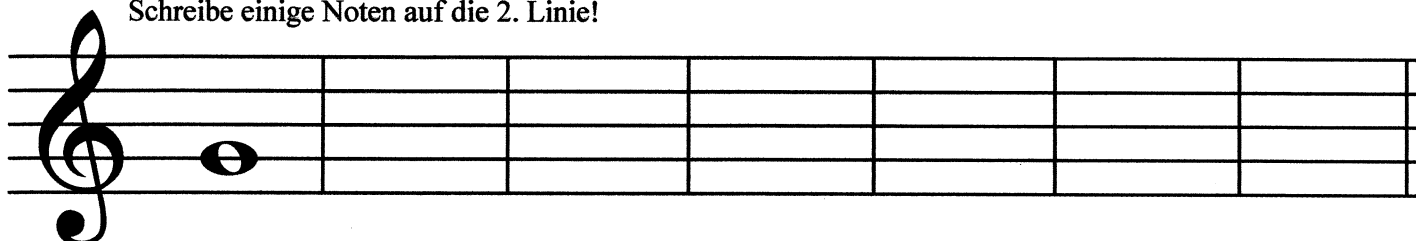
Beispiel 2: länger kürzer

Notenkunde

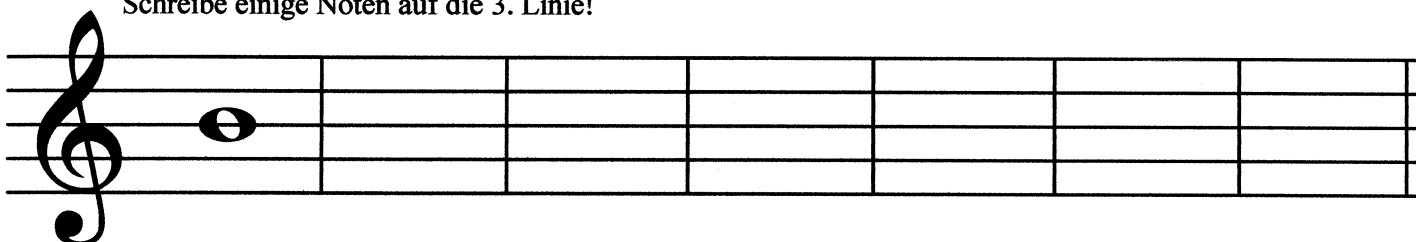


Violinschlüssel

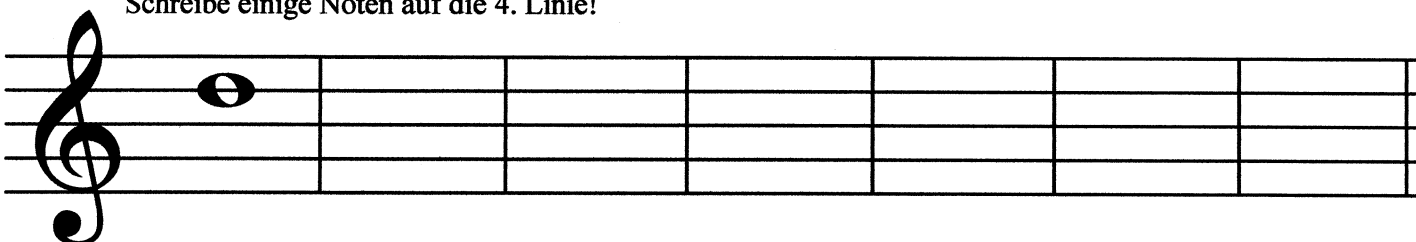
Schreibe einige Noten auf die 2. Linie!



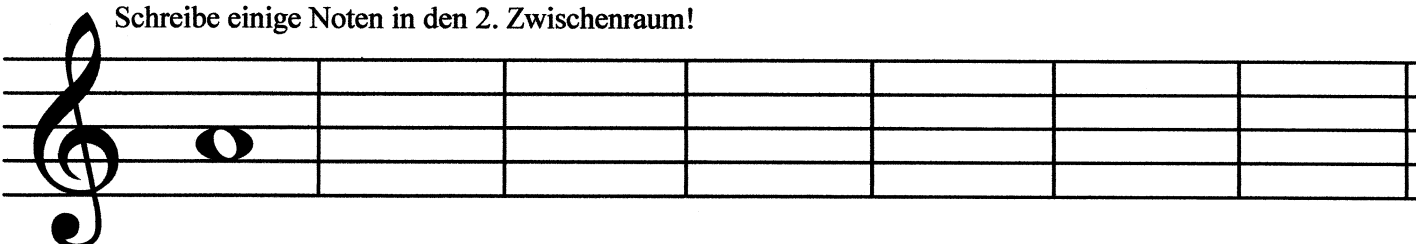
Schreibe einige Noten auf die 3. Linie!



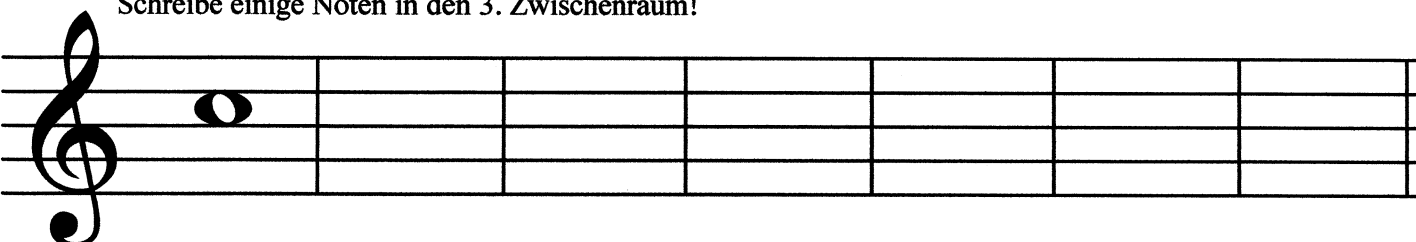
Schreibe einige Noten auf die 4. Linie!



Schreibe einige Noten in den 2. Zwischenraum!



Schreibe einige Noten in den 3. Zwischenraum!



Schreibe diese Noten ab!

A musical staff with a treble clef and a key signature of one flat (B-flat). The staff contains eight measures of music, each with a single half note. The notes are: G4 (first line), A4 (first space), B4 (second line), C5 (second space), B4 (second line), A4 (first space), G4 (first line), and F4 (below the first line).

A musical staff with a treble clef and a key signature of one flat (B-flat). The staff contains eight measures of music, each with a single half note. The notes are: E4 (below the first line), D4 (below the first line), C4 (below the first line), B3 (below the first line), A3 (below the first line), G3 (below the first line), F3 (below the first line), and E3 (below the first line).

A musical staff with a treble clef and a key signature of one flat (B-flat). The staff contains eight measures of music, each with a single half note. The notes are: D4 (below the first line), C4 (below the first line), B3 (below the first line), A3 (below the first line), G3 (below the first line), F3 (below the first line), E3 (below the first line), and D3 (below the first line).

Noten und Griffe

A musical staff in treble clef showing three notes: G4, A4, and B4. Below each note is a fingering diagram consisting of three circles. For G4, all three circles are filled. For A4, the top two circles are filled and the bottom one is empty. For B4, the top two circles are filled and the bottom one is empty.

Übung 1

Schreibe folgende Griffe!

A musical staff in treble clef showing six notes: G4, A4, B4, C5, D5, and E5. Below each note is a fingering diagram consisting of three circles. For G4, all three circles are empty. For A4, the top two circles are empty and the bottom one is empty. For B4, the top two circles are empty and the bottom one is empty. For C5, the top two circles are empty and the bottom one is empty. For D5, the top two circles are empty and the bottom one is empty. For E5, the top two circles are empty and the bottom one is empty.

A musical staff in treble clef showing six notes: G4, A4, B4, C5, D5, and E5. Below each note is a fingering diagram consisting of three circles. For G4, all three circles are empty. For A4, the top two circles are empty and the bottom one is empty. For B4, the top two circles are empty and the bottom one is empty. For C5, the top two circles are empty and the bottom one is empty. For D5, the top two circles are empty and the bottom one is empty. For E5, the top two circles are empty and the bottom one is empty.

Schreibe folgende Noten!

A musical staff in treble clef with six empty notes. Below each note is a fingering diagram consisting of three circles. For the first note, all three circles are filled. For the second note, the top two circles are filled and the bottom one is empty. For the third note, the top two circles are filled and the bottom one is empty. For the fourth note, the top two circles are filled and the bottom one is empty. For the fifth note, the top two circles are filled and the bottom one is empty. For the sixth note, all three circles are filled.

Noten und Griffe

A musical staff in treble clef with five measures. Each measure contains a single note: G4, A4, B4, C5, and D5. Below each note is a diagram of the flute's keys, represented by circles. Filled circles indicate keys to be pressed, and open circles indicate keys to be held open.

Note	Fingering (Left to Right)
G4	1, 2, 3, 4
A4	1, 2, 3, 4
B4	1, 2, 3, 4
C5	1, 2, 3, 4, 5
D5	1, 2, 3, 4, 5

Übung 2

Schreibe folgende Griffe!

A musical staff in treble clef with five measures. Each measure contains a single note: G4, A4, B4, C5, and D5. Below each note is an empty diagram of the flute's keys, represented by circles, for the student to write the correct fingering.

Note	Fingering (Left to Right)
G4	○, ○, ○, ○
A4	○, ○, ○, ○
B4	○, ○, ○, ○
C5	○, ○, ○, ○, ○
D5	○, ○, ○, ○, ○

Schreibe folgende Noten!

A musical staff in treble clef with five empty measures. Below each measure is a pre-filled diagram of the flute's keys, represented by circles. Filled circles indicate keys to be pressed, and open circles indicate keys to be held open.

Fingering (Left to Right)
1, 2, 3, 4
1, 2, 3, 4
1, 2, 3, 4, 5
1, 2, 3, 4, 5
1, 2, 3, 4, 5

Übung 3

EML 1 Blockflöte

Schreibe folgende Griffe!

A musical staff in treble clef with five measures. Each measure contains a single note: G4, A4, B4, C5, and D5. Below each note is a fingering diagram consisting of three circles representing fingers. The first four notes (G, A, B, C) have the first, second, and third fingers indicated by open circles. The fifth note (D) has the first, second, and third fingers indicated by open circles, with the third finger being the ring finger.

Schreibe folgende Noten!

A musical staff in treble clef with five empty measures. Below each measure is a fingering diagram consisting of three circles representing fingers. The first measure has three black circles (first, second, and third fingers). The second measure has a black circle (first finger) and an open circle (second finger). The third measure has three black circles (first, second, and third fingers). The fourth measure has an open circle (first finger) and a black circle (second finger). The fifth measure has two black circles (first and second fingers) and two open circles (third and fourth fingers).

Übung 4

EML 1 Blockflöte

Schreibe folgende Griffe!

A musical staff in treble clef with five measures. Each measure contains a single note: G4, A4, B4, C5, and D5. Below each note is a fingering diagram consisting of three circles representing fingers. The first four notes (G, A, B, C) have the first, second, and third fingers indicated by open circles. The fifth note (D) has the first, second, and third fingers indicated by open circles, with the third finger being the ring finger.

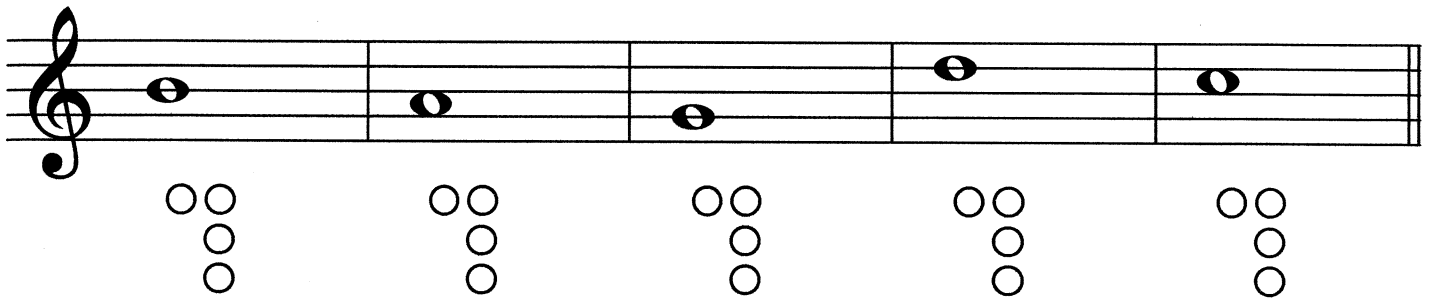
Schreibe folgende Noten!

A musical staff in treble clef with five empty measures. Below each measure is a fingering diagram consisting of three circles representing fingers. The first measure has an open circle (first finger), a black circle (second finger), and an open circle (third finger). The second measure has three black circles (first, second, and third fingers). The third measure has two black circles (first and second fingers) and one open circle (third finger). The fourth measure has two black circles (first and second fingers) and one open circle (third finger). The fifth measure has a black circle (first finger), a black circle (second finger), and two open circles (third and fourth fingers).

Übung 5

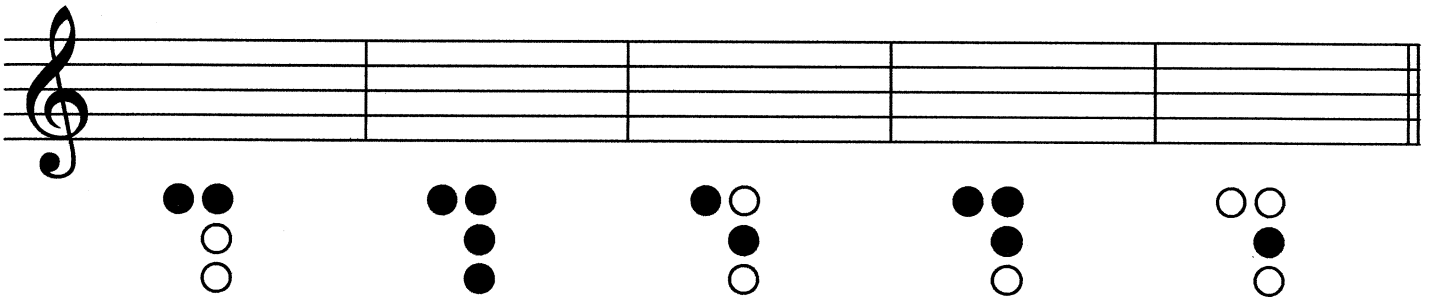
EML 1 Blockflöte

Schreibe folgende Griffe!



A musical staff in treble clef with five measures. Each measure contains a single note: G4, A4, B4, C5, and D5. Below each note is a fingering diagram consisting of three circles arranged vertically, representing the right hand fingers (index, middle, ring).

Schreibe folgende Noten!

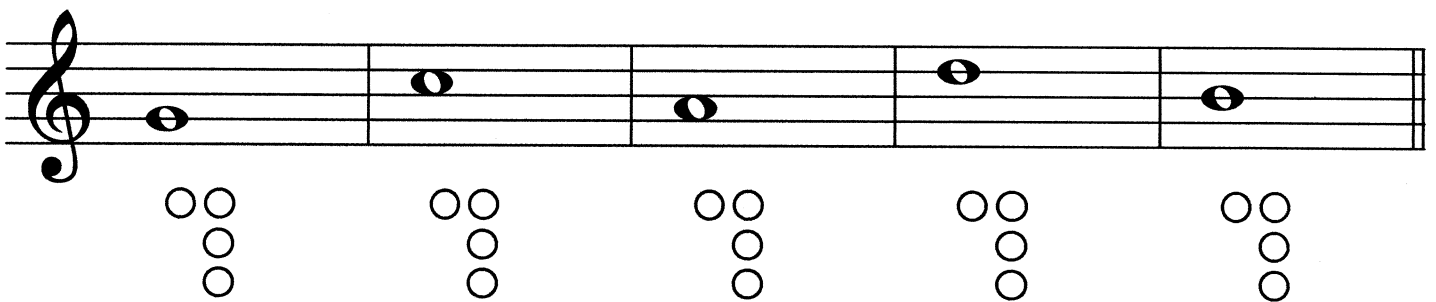


A musical staff in treble clef with five empty measures. Below each measure is a fingering diagram consisting of three circles arranged vertically. The first four diagrams have two black dots on the top two circles, and the fifth has one black dot on the top circle. This represents notes: G4, A4, B4, C5, and D5.

Übung 6

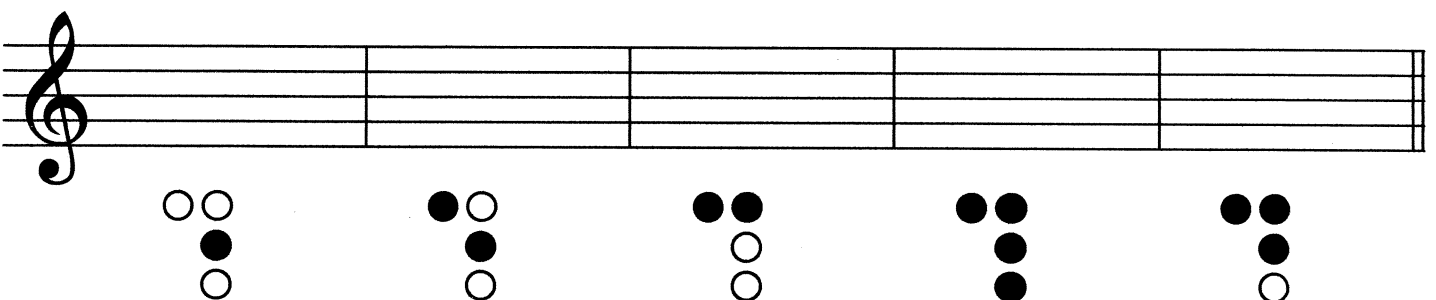
EML 1 Blockflöte

Schreibe folgende Griffe!



A musical staff in treble clef with five measures. Each measure contains a single note: G4, A4, B4, C5, and D5. Below each note is a fingering diagram consisting of three circles arranged vertically, representing the right hand fingers (index, middle, ring).

Schreibe folgende Noten!



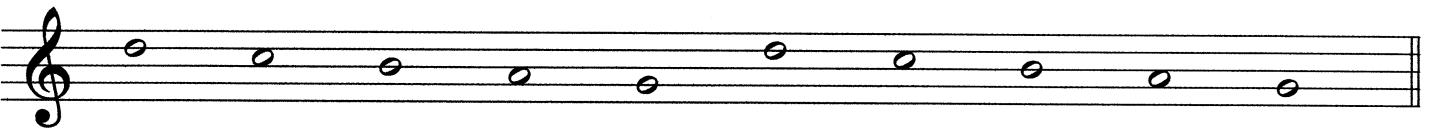
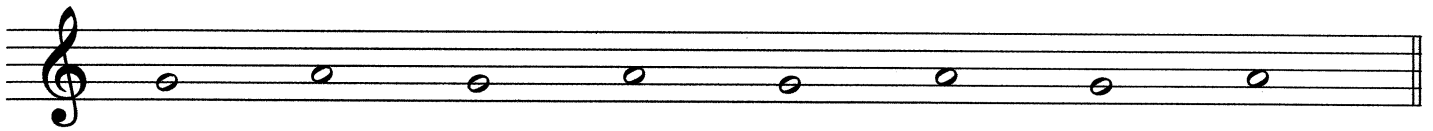
A musical staff in treble clef with five empty measures. Below each measure is a fingering diagram consisting of three circles arranged vertically. The first diagram has one black dot on the top circle. The second has two black dots on the top two circles. The third has two black dots on the top two circles and one on the bottom circle. The fourth has two black dots on the top two circles and one on the bottom circle. The fifth has two black dots on the top two circles and one on the bottom circle. This represents notes: G4, A4, B4, C5, and D5.

Notenhäse

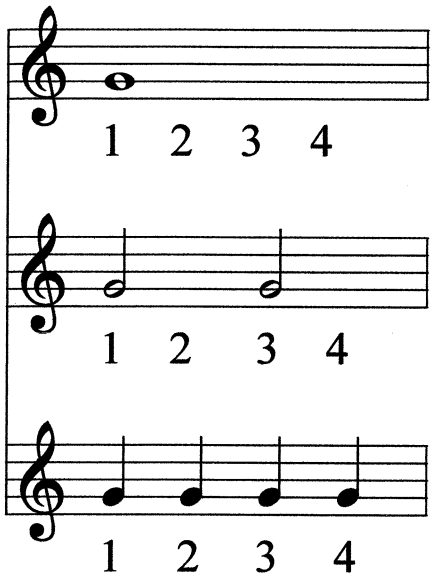


Übung 7

Zeichne die fehlenden Notenhäse ein!



Notenwerte



Ganze Note (4 Schläge)
1 2 3 4

Halbe Note (2 Schläge)
1 2 3 4

Viertel Note (1 Schlag)
1 2 3 4

Taktstriche



1 2 3 4 1 2 3 4 1 2 3 4 1 2 3 4 1 2 3 4 1 2 3 4

Übung 8

Setze die fehlenden Taktstriche ein!



Übung 9

EML 1 Blockflöte

Setze die fehlenden Taktstriche ein!



Übung 10

EML 1 Blockflöte

Setze die fehlenden Taktstriche ein!



Übung 11

Schreibe folgende Griffe!

A musical staff in treble clef containing five notes: G4, A4, B4, C5, and D5. Below each note is a fingering diagram consisting of three circles representing the fingers. The fingerings are: G4 (index, middle, ring), A4 (index, middle, ring), B4 (index, middle, ring), C5 (index, middle, ring), and D5 (index, middle, ring).

Schreibe folgende Noten!

A musical staff in treble clef with five empty measures. Below each measure is a fingering diagram consisting of three circles representing the fingers. The fingerings are: G4 (index, middle, ring), A4 (index, middle, ring), B4 (index, middle, ring), C5 (index, middle, ring), and D5 (index, middle, ring).

Zeichne die fehlenden Notenhälse ein!

A musical staff in treble clef containing ten notes without stems, arranged in a sequence: G4, A4, B4, C5, D5, E5, F5, G5, A5, and B5.

Setze die fehlenden Taktstriche ein!

A musical staff in treble clef with a 4/4 time signature. It contains ten notes without stems, arranged in a sequence: G4, A4, B4, C5, D5, E5, F5, G5, A5, and B5. The time signature is written as 4 over 4.

Übung 12

Schreibe folgende Griffe!

A musical staff in treble clef with five measures. Each measure contains a single note: G4, A4, B4, C5, and D5. Below each note is a vertical column of three circles representing fingerings: G4 (index, middle, ring), A4 (index, middle, ring), B4 (index, middle, ring), C5 (index, middle, ring), and D5 (index, middle, ring).

Schreibe folgende Noten!

A musical staff in treble clef with five empty measures. Below each measure is a vertical column of three circles representing fingerings: Measure 1 (index, middle, ring), Measure 2 (index, middle, ring), Measure 3 (index, middle, ring), Measure 4 (index, middle, ring), and Measure 5 (index, middle, ring).

Zeichne die fehlenden Notenhälse ein!

A musical staff in treble clef with ten notes. Each note is a half note with a stem pointing upwards, but the stem is missing. The notes are G4, A4, B4, C5, D5, E5, F5, G5, A5, and B5.

Setze die fehlenden Taktstriche ein!

A musical staff in treble clef with a 4/4 time signature. It contains ten quarter notes: G4, A4, B4, C5, D5, E5, F5, G5, A5, and B5. The bar lines are missing, and the task is to insert them.

Übung 13

Schreibe folgende Griffe!

A musical staff in treble clef with five measures. Each measure contains a single note: G4, A4, B4, C5, and D5. Below each note is a fingering diagram consisting of three circles representing fingers 1, 2, and 3. The fingerings are: G4 (1, 2, 3), A4 (1, 2, 3), B4 (1, 2, 3), C5 (1, 2, 3), and D5 (1, 2, 3).

Schreibe folgende Noten!

A musical staff in treble clef with five empty measures. Below each measure is a fingering diagram consisting of three circles representing fingers 1, 2, and 3. The fingerings are: G4 (1, 2, 3), A4 (1, 2, 3), B4 (1, 2, 3), C5 (1, 2, 3), and D5 (1, 2, 3).

Zeichne die fehlenden Notenhäuse ein!

A musical staff in treble clef with a sequence of notes: G4, A4, B4, C5, B4, A4, G4, F4, E4, D4. The notes are written as stems without heads, and the stems are missing for the notes G4, A4, B4, C5, and D4.

Setze die fehlenden Taktstriche ein!

A musical staff in treble clef with a 4/4 time signature. The notes are: G4, A4, B4, C5, B4, A4, G4, F4, E4, D4. The bar lines are missing for the measures containing A4, B4, C5, B4, and A4.

Gehörbildung Rhythmus

Kreuze den richtigen Rhythmus an!



Kreuze den richtigen Rhythmus an!



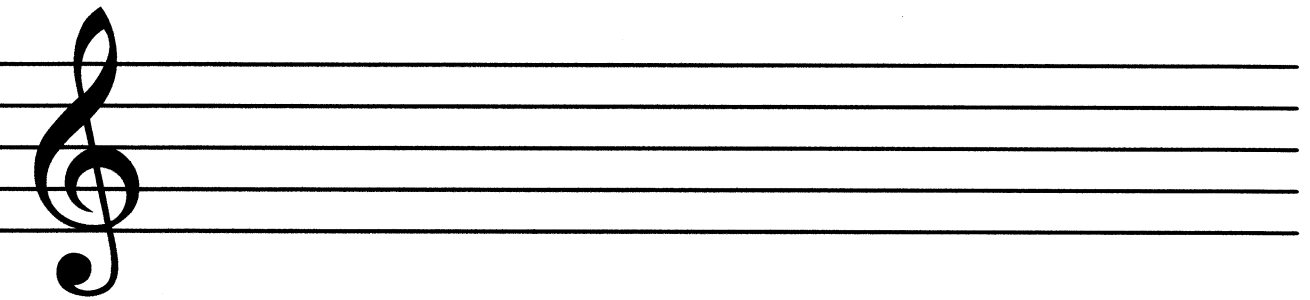
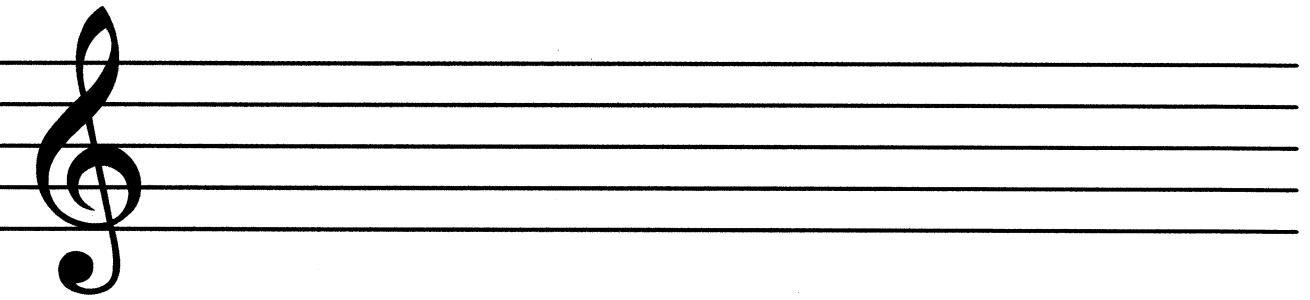
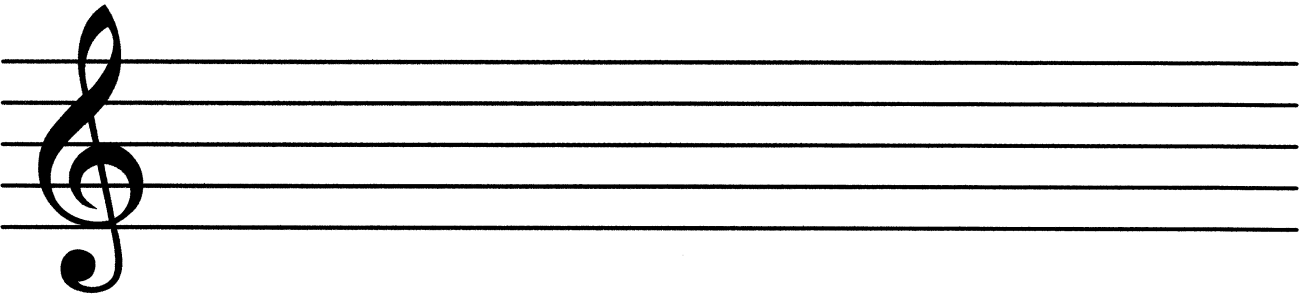
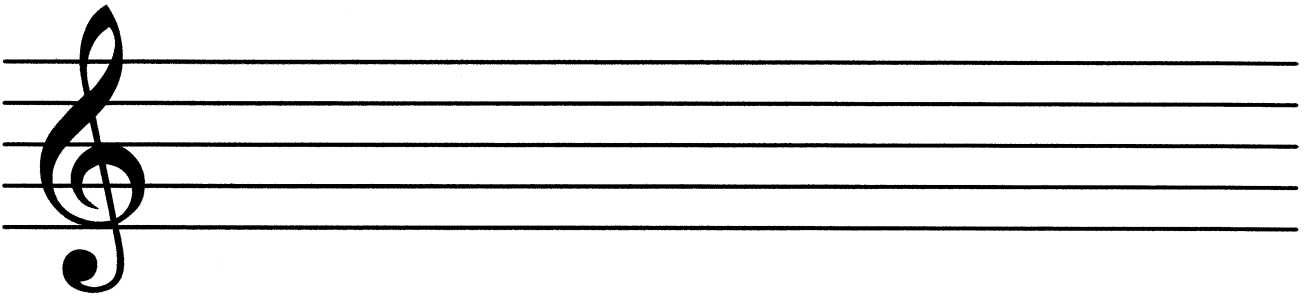
Gehörbildung Rhythmus

Kreuze den richtigen Rhythmus an!



Kreuze den richtigen Rhythmus an!





Übungstest

Elementare Musiklehre 1

Blockflöte

Name: _____

1. Stelle fest, ob der jeweils 2. Ton höher oder tiefer ist als der erste!

Beispiel 1: höher tiefer

Beispiel 2: höher tiefer

2 mögliche Punkte

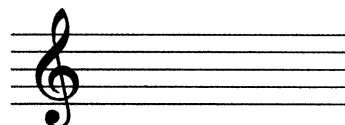
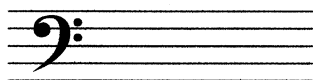
2. Stelle fest, ob der jeweils 2. Ton länger oder kürzer ist als der erste!

Beispiel 1: länger kürzer

Beispiel 2: länger kürzer

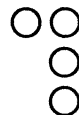
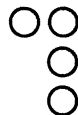
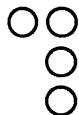
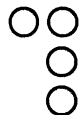
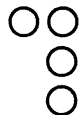
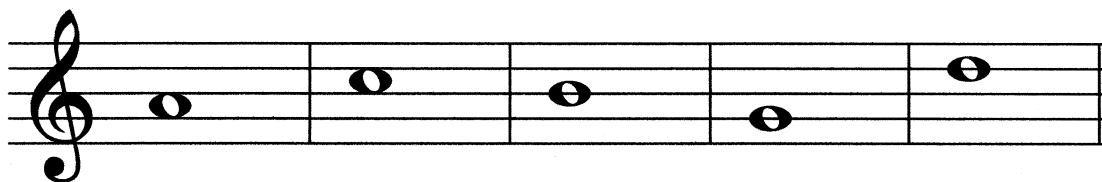
2 mögliche Punkte

3. Kreuze an, welcher Schlüssel der Violinschlüssel ist!



1 möglicher Punkt

4. Schreibe folgende Griffe!



5 mögliche Punkte

5. Schreibe folgende Noten!

A musical staff with a treble clef, divided into five measures. Below the staff are five fingerings, each represented by a vertical column of three circles. The fingerings are: 1. All three circles are filled (black). 2. Top two circles are filled, bottom one is empty (white). 3. Top circle is filled, middle and bottom are empty. 4. Top and middle circles are empty, bottom is filled. 5. Top circle is filled, middle and bottom are empty.

5 mögliche Punkte

6. Zeichne die fehlenden Notenhäse ein!

A musical staff with a treble clef containing five notes. Each note is a whole note with a stem pointing upwards, but the stem is missing the top half. The notes are on the first, second, third, fourth, and fifth lines of the staff.

5 mögliche Punkte

7. Setze die fehlenden Taktstriche ein!

A musical staff with a treble clef and a 4/4 time signature. The staff contains ten notes: eight quarter notes and two half notes. The notes are on the first, second, third, and fourth lines of the staff. The first two notes are quarter notes, followed by two pairs of quarter notes, and finally two half notes.

4 mögliche Punkte

8. Kreuze den richtigen Rhythmus an!

A musical staff with a treble clef containing four quarter notes on the first, second, third, and fourth lines of the staff.

A musical staff with a treble clef containing four eighth notes on the first, second, third, and fourth lines of the staff.

1 möglicher Punkt

- 25 - 22 Punkte sehr gut
- 21 - 19 Punkte gut
- 18 - 16 Punkte befriedigend
- 15 - 13 Punkte genügend
- 12 - 0 Punkte nicht genügend

Gesamtpunkte

Beurteilung