

Elementare Musiklehre 1

Klavier

Lehrstoff und Übungen

1./2. Gehörbildung:

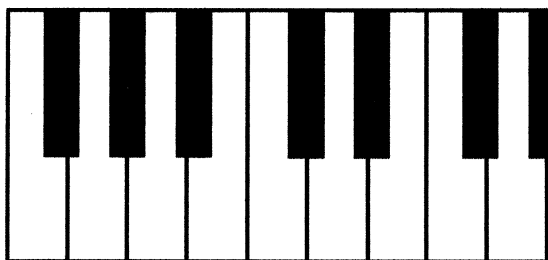
Tonhöhe

Tondauer

3. Notenschlüssel

4. Noten schreiben

5. Noten und Tasten



7. Notenwerte / Taktstriche



8. Rhythmus hören

EML 1 Alter: ca. 5 - 7 Jahre

Der Lehrstoff für die EML ist bewusst einfach gehalten und verzichtet auf erklärende Texte, besteht vorwiegend aus Übungen und soll den ersten Umgang mit dem Notenlesen und der Notenschrift vermitteln. Die Übungen können begleitend zu einem Musiktheoriekurs, aber auch von den InstrumentallehrerInnen ergänzend im Hauptfachunterricht verwendet werden. Da die EML nicht aufbauend konzipiert ist, kann je nach Instrument, Alter und geistiger Reife in jede Stufe eingestiegen werden.

Übungen zur Gehörbildung

Stelle fest, ob der jeweils 2. Ton höher oder tiefer ist als der erste!

Beispiel 1: höher tiefer

Beispiel 2: höher tiefer

Stelle fest, ob der jeweils 2. Ton länger oder kürzer ist als der erste!

Beispiel 1: länger kürzer

Beispiel 2: länger kürzer

Übungen zur Gehörbildung

Stelle fest, ob der jeweils 2. Ton höher oder tiefer ist als der erste!

Beispiel 1: höher tiefer

Beispiel 2: höher tiefer

Stelle fest, ob der jeweils 2. Ton länger oder kürzer ist als der erste!

Beispiel 1: länger kürzer

Beispiel 2: länger kürzer

Notenkunde

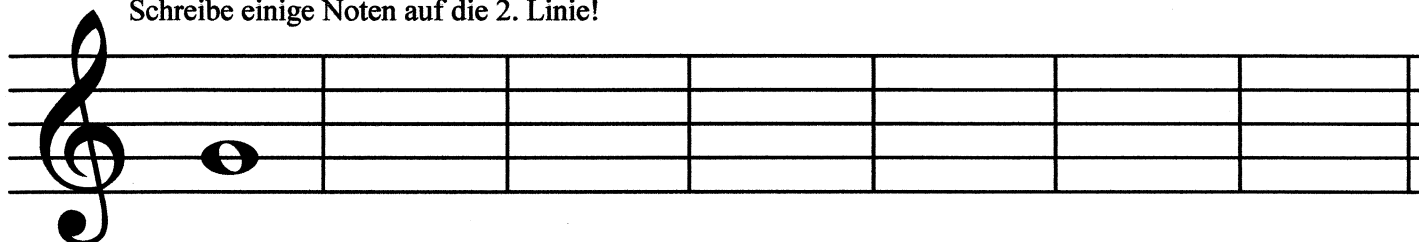


Violinschlüssel

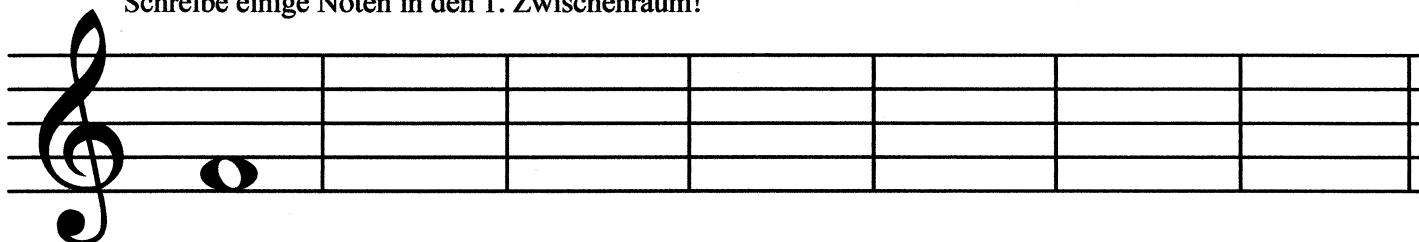


Bassschlüssel

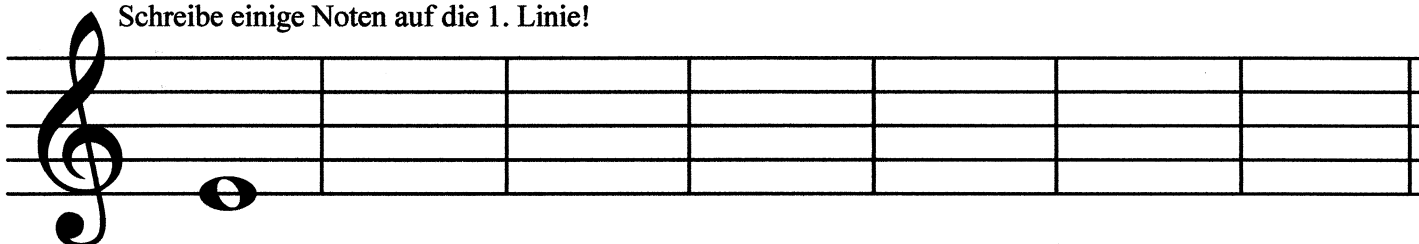
Schreibe einige Noten auf die 2. Linie!



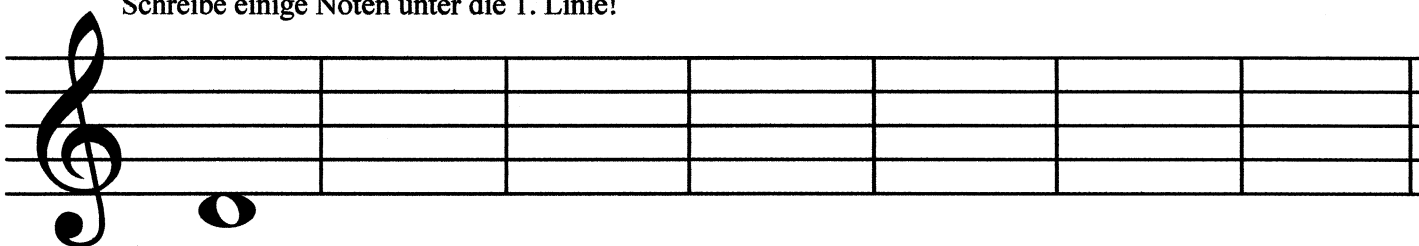
Schreibe einige Noten in den 1. Zwischenraum!



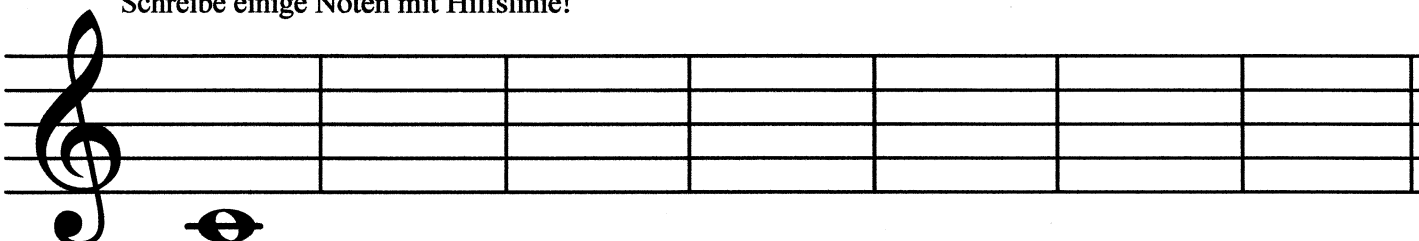
Schreibe einige Noten auf die 1. Linie!



Schreibe einige Noten unter die 1. Linie!



Schreibe einige Noten mit Hilfslinie!



Schreibe diese Noten ab!

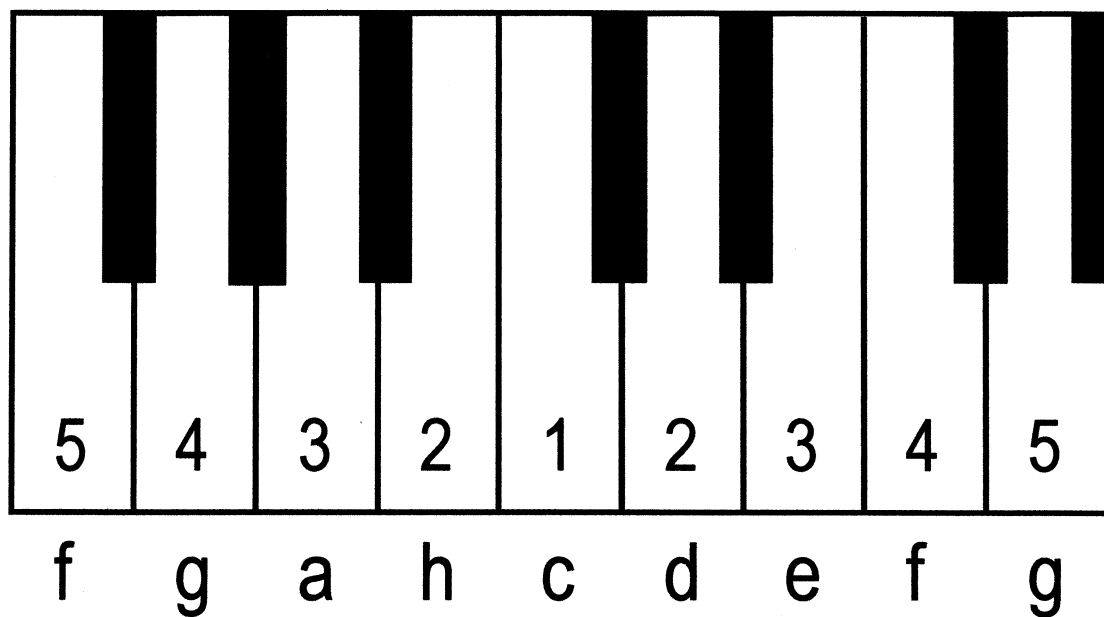
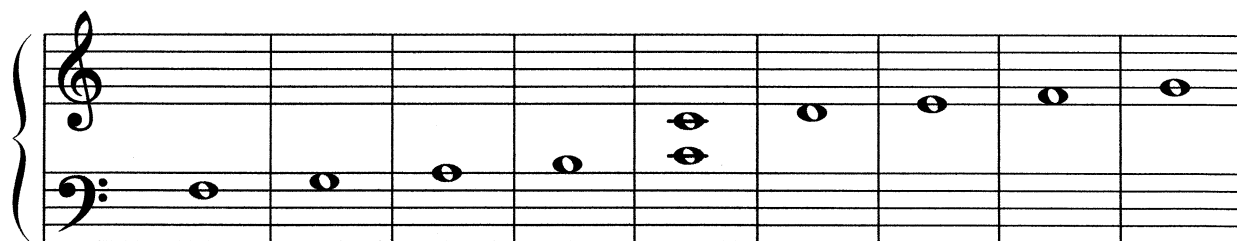
A musical staff with a treble clef and a key signature of one flat (B-flat). The staff contains eight measures. The notes are: G4 (first line), A4 (first space), B4 (second line), C5 (second space), B4 (second line), A4 (first space), G4 (first line).

A musical staff with a treble clef and a key signature of one flat (B-flat). The staff contains eight measures. The notes are: A4 (first space), B4 (second line), C5 (second space), B4 (second line), A4 (first space), G4 (first line), F4 (first space), E4 (first line).

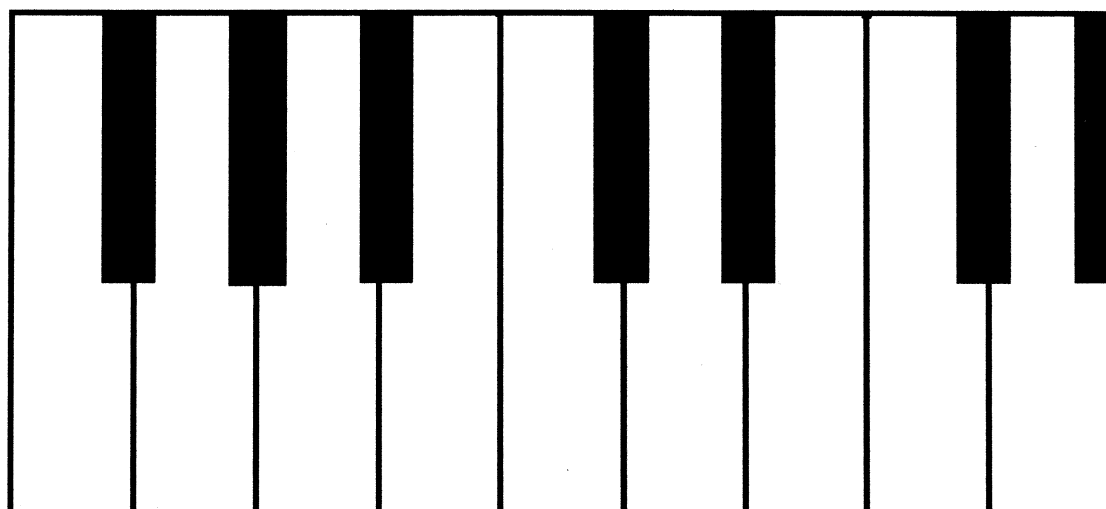
A musical staff with a treble clef and a key signature of one flat (B-flat). The staff contains eight measures. The notes are: G4 (first line), F4 (first space), E4 (first line), D4 (first space), C4 (first line), B3 (first space), A3 (first line), G3 (first line).

Noten und Tasten

EML 1 Klavier

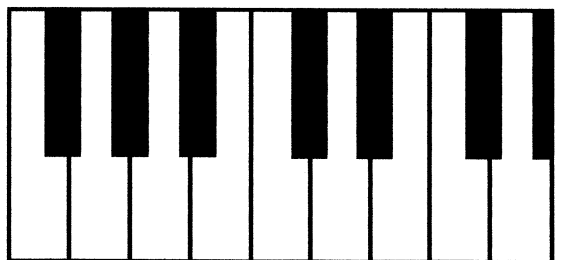
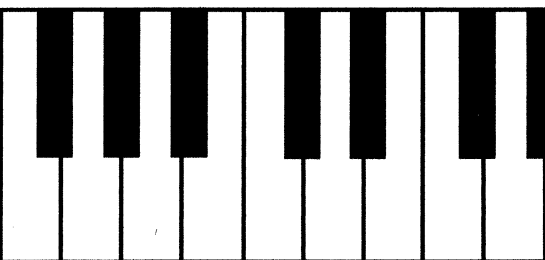
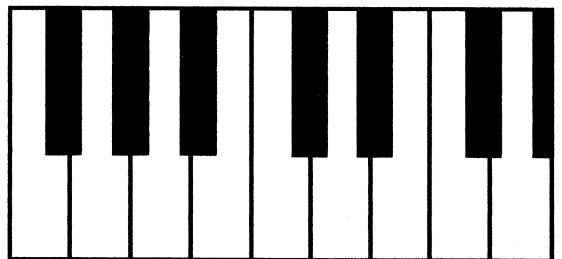
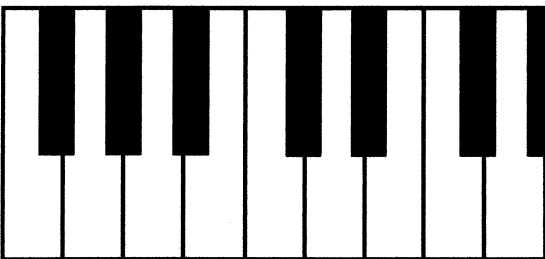
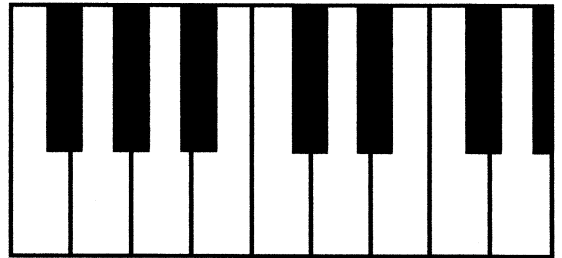
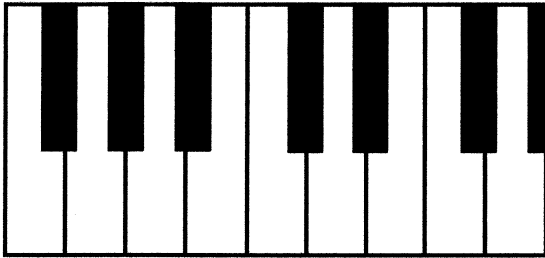


Setze deine Finger auf die Tasten und zeichne sie nach!



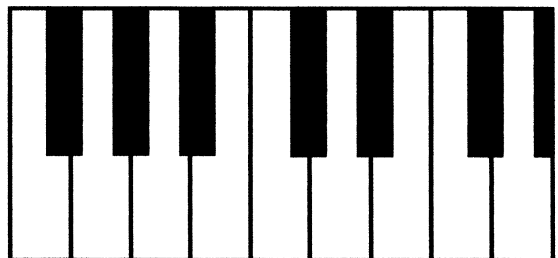
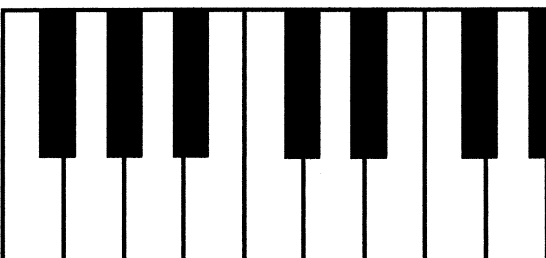
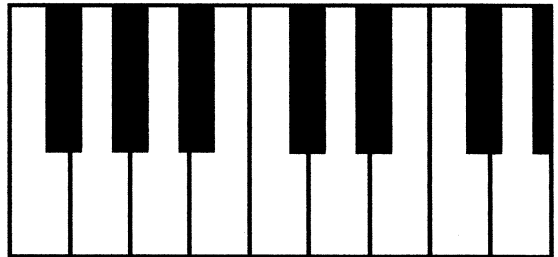
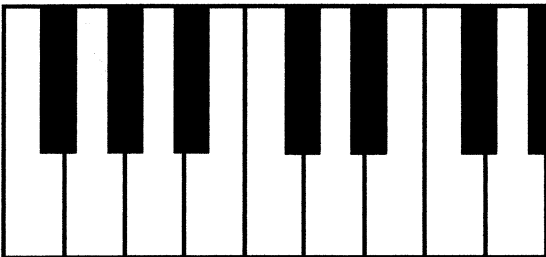
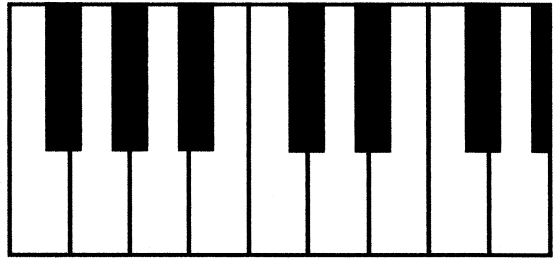
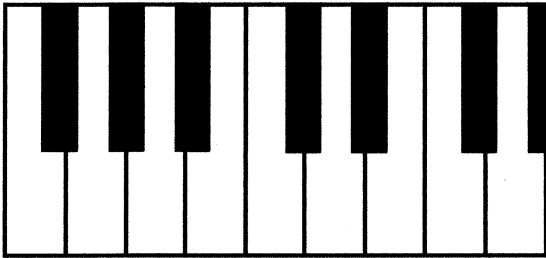
Übung 1

Kennzeichne folgende Noten auf den Klaviertasten!



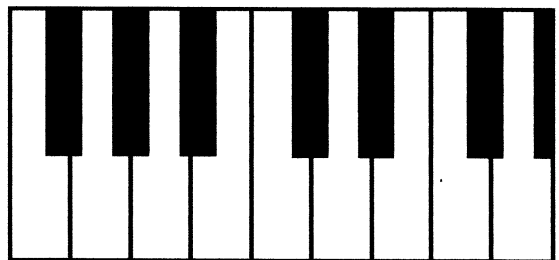
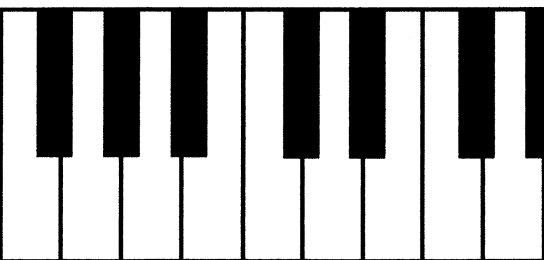
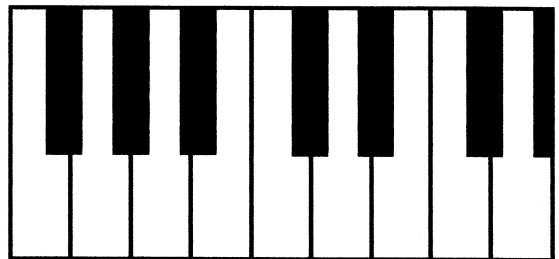
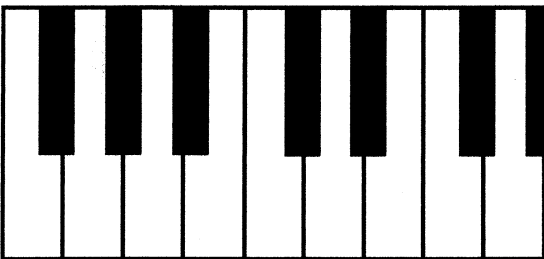
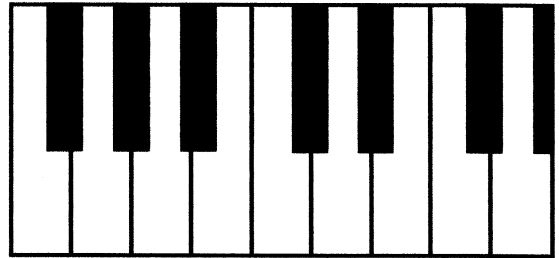
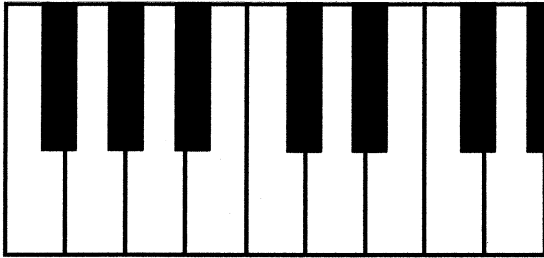
Übung 2

Kennzeichne folgende Noten auf den Klaviertasten!



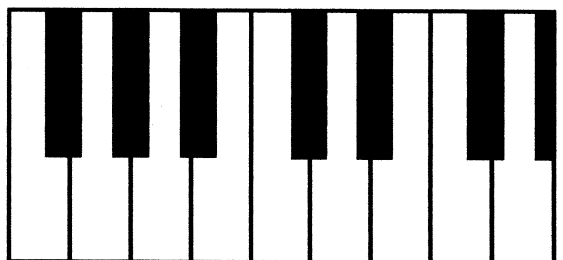
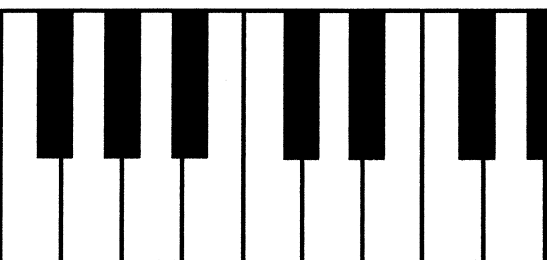
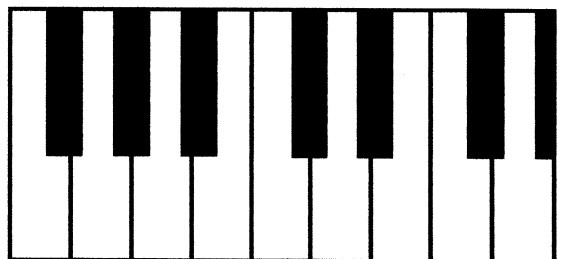
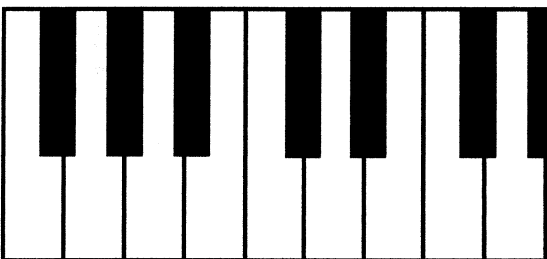
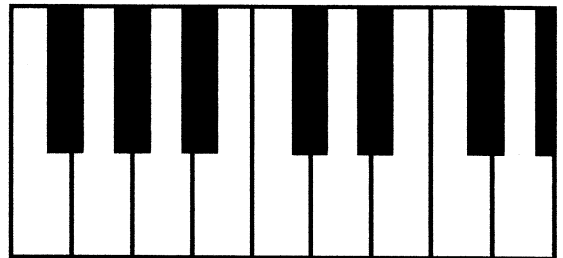
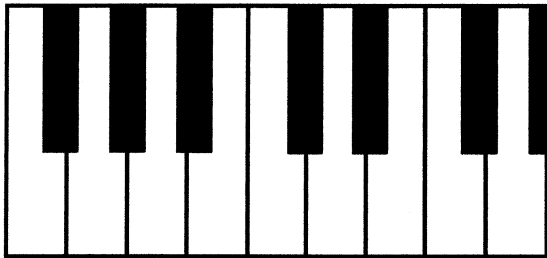
Übung 3

Kennzeichne folgende Noten auf den Klaviertasten!



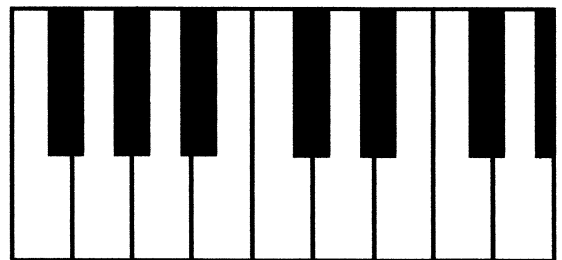
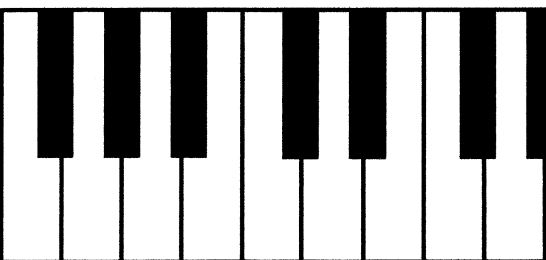
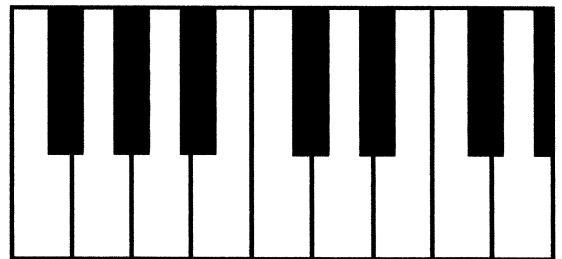
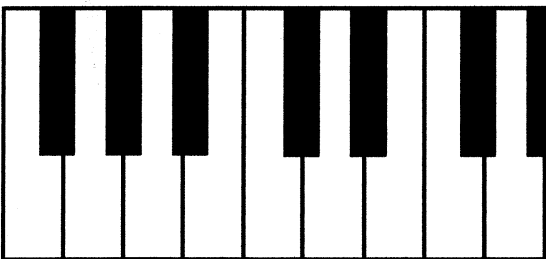
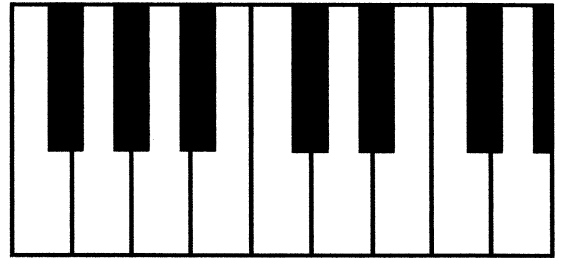
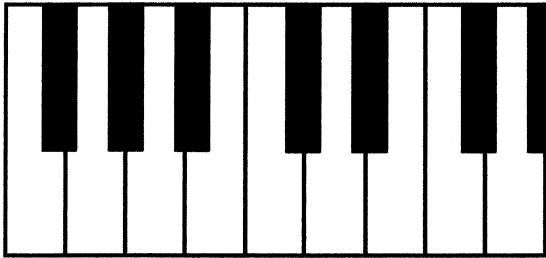
Übung 4

Kennzeichne folgende Noten auf den Klaviertasten!



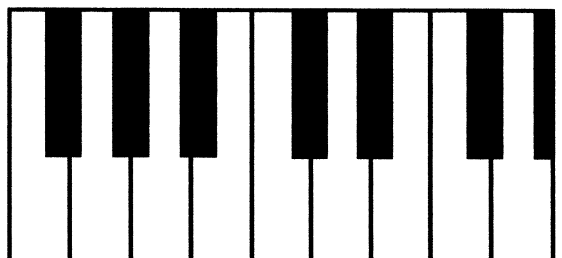
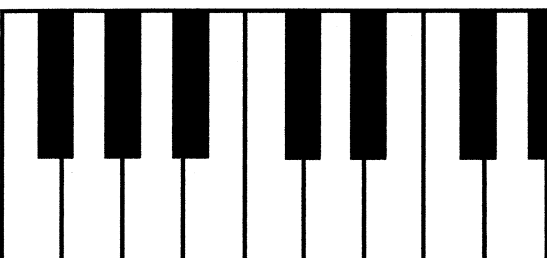
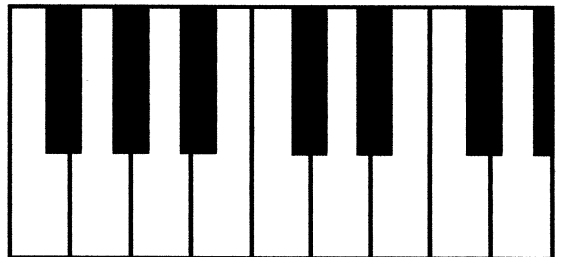
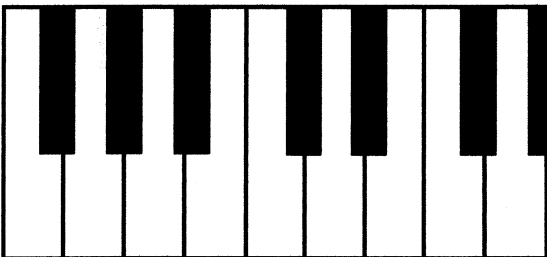
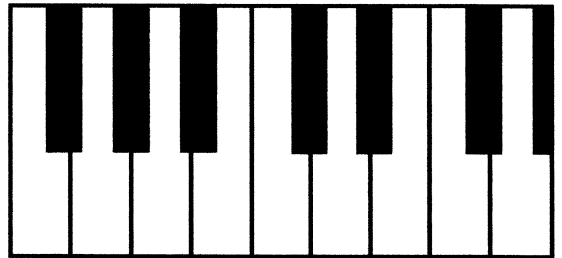
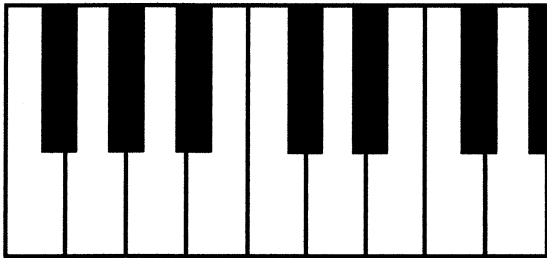
Übung 5

Kennzeichne folgende Noten auf den Klaviertasten!



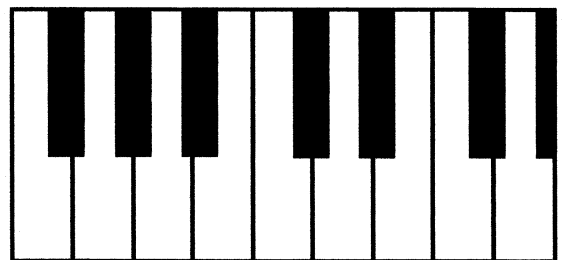
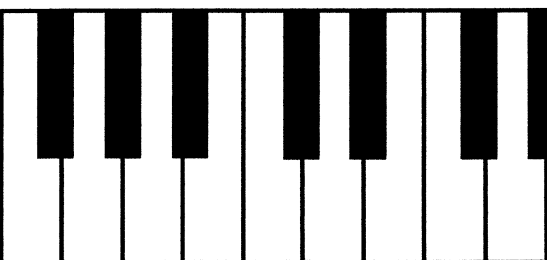
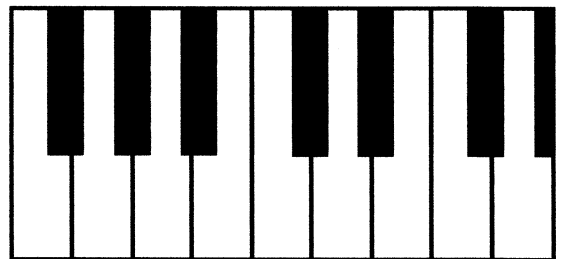
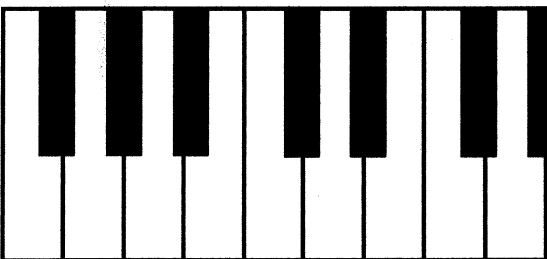
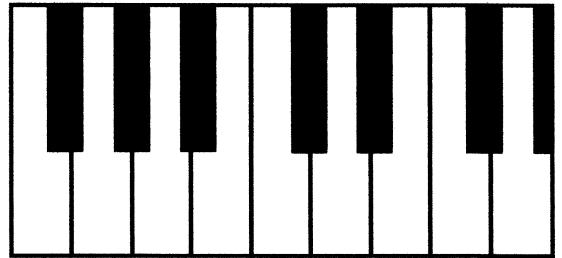
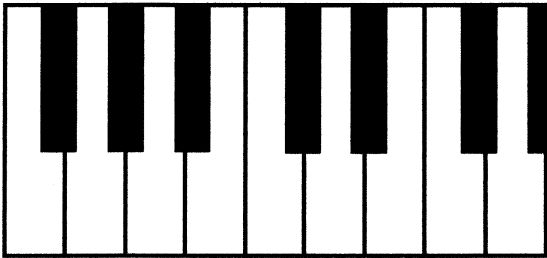
Übung 6

Kennzeichne folgende Noten auf den Klaviertasten!



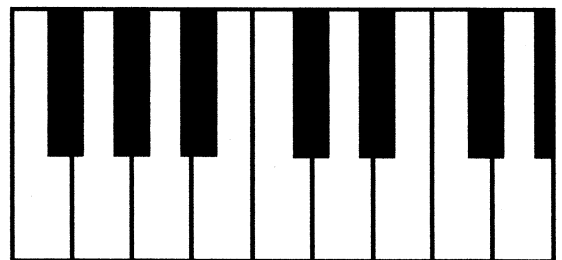
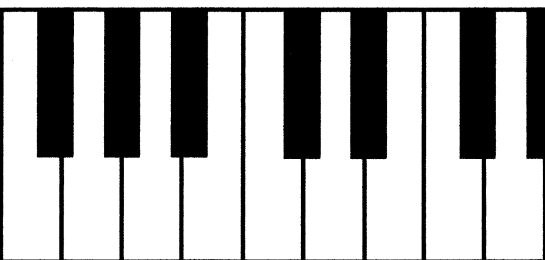
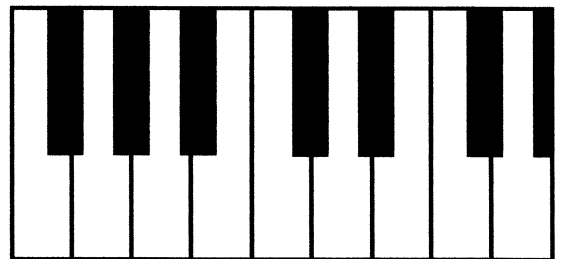
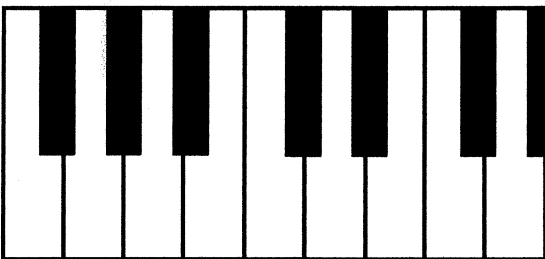
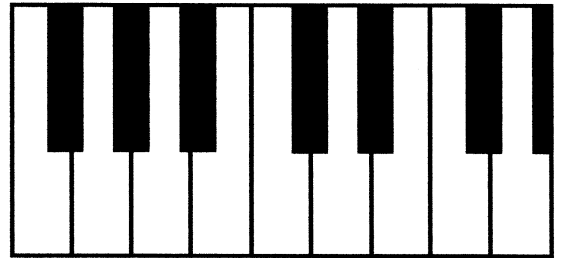
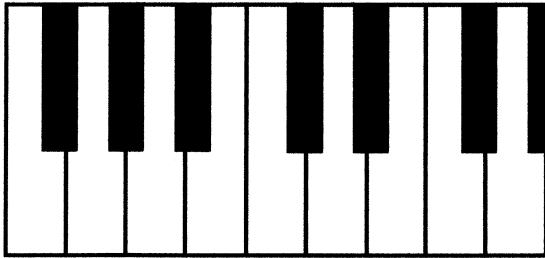
Übung 7

Kennzeichne folgende Noten auf den Klaviertasten!



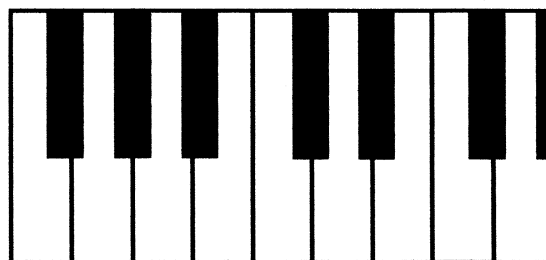
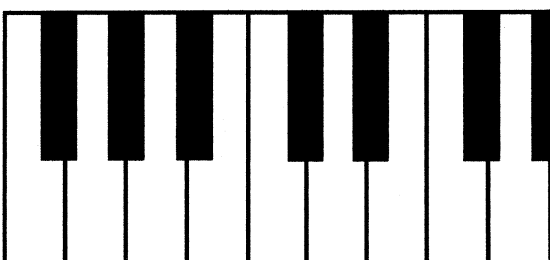
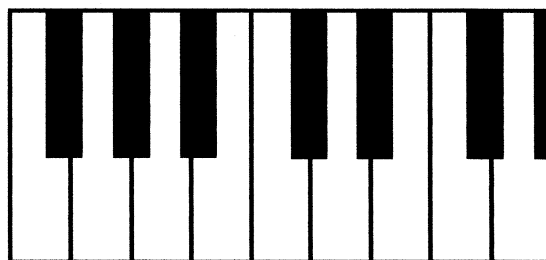
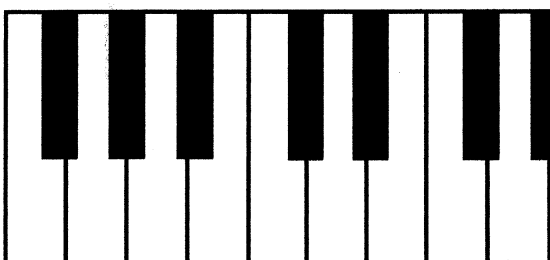
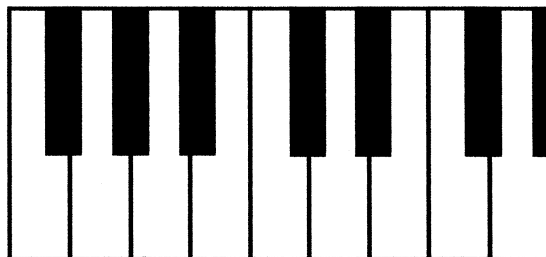
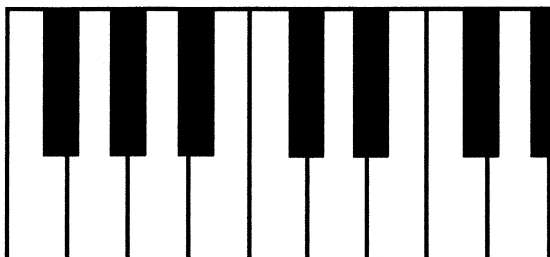
Übung 8

Kennzeichne folgende Noten auf den Klaviertasten!



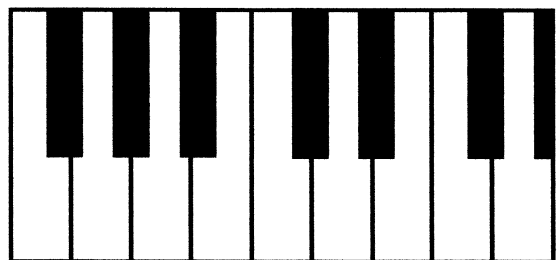
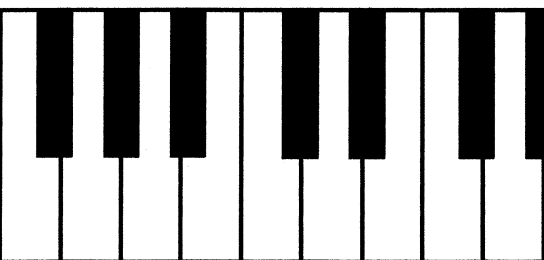
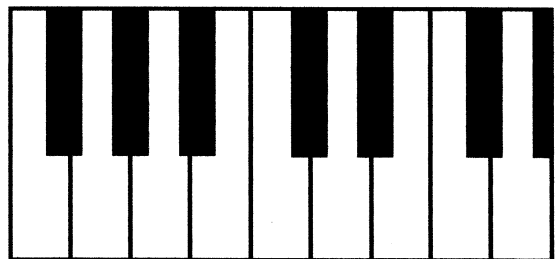
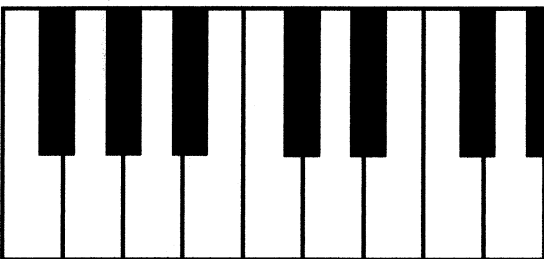
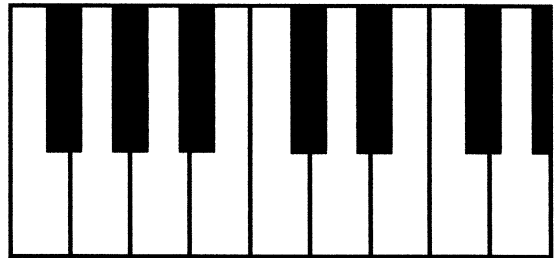
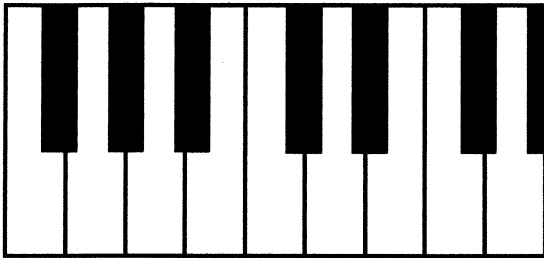
Übung 9

Kennzeichne folgende Noten auf den Klaviertasten!



Übung 10

Kennzeichne folgende Noten auf den Klaviertasten!

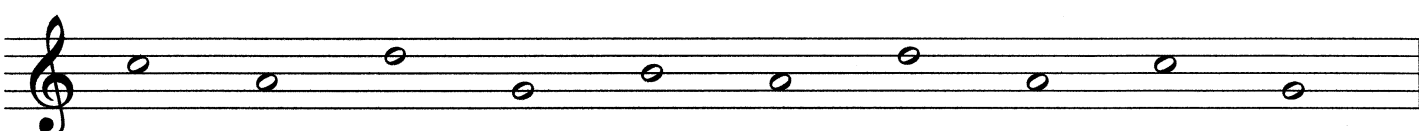
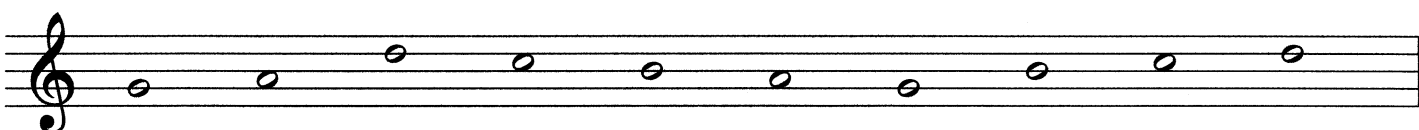
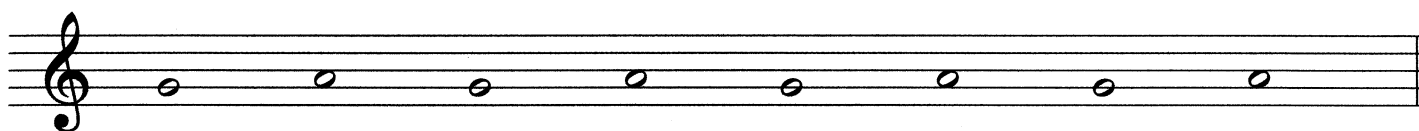


Notenhäse



Übung 11

Zeichne die fehlenden Notenhäse ein!



Notenwerte

Three musical staves illustrating note values in 4/4 time. The first staff shows a whole note (semibreve) on a treble clef staff, with the numbers 1, 2, 3, and 4 written below it. The second staff shows a half note (minim) on a treble clef staff, with the numbers 1, 2, 3, and 4 written below it. The third staff shows four quarter notes (crotchets) on a treble clef staff, with the numbers 1, 2, 3, and 4 written below each note.

Ganze Note (4 Schläge)

Halbe Note (2 Schläge)

Viertel Note (1 Schlag)

Taktstriche

A musical staff in 4/4 time with a treble clef. The staff contains a sequence of notes: a whole note, followed by two half notes, then two groups of two quarter notes, and finally two groups of four eighth notes. The bar lines are missing, and the numbers 1 2 3 4 are written below the staff to indicate the beat structure for each measure.

1 2 3 4 1 2 3 4 1 2 3 4 1 2 3 4 1 2 3 4 1 2 3 4

Übung 12

Setze die fehlenden Taktstriche ein!

Two musical staves in 4/4 time with a treble clef. The first staff contains a sequence of 12 quarter notes. The second staff contains a sequence of 12 eighth notes. The bar lines are missing, and the student is instructed to insert them.

Übung 13

EML 1 Klavier

Setze die fehlenden Taktstriche ein!



Übung 14

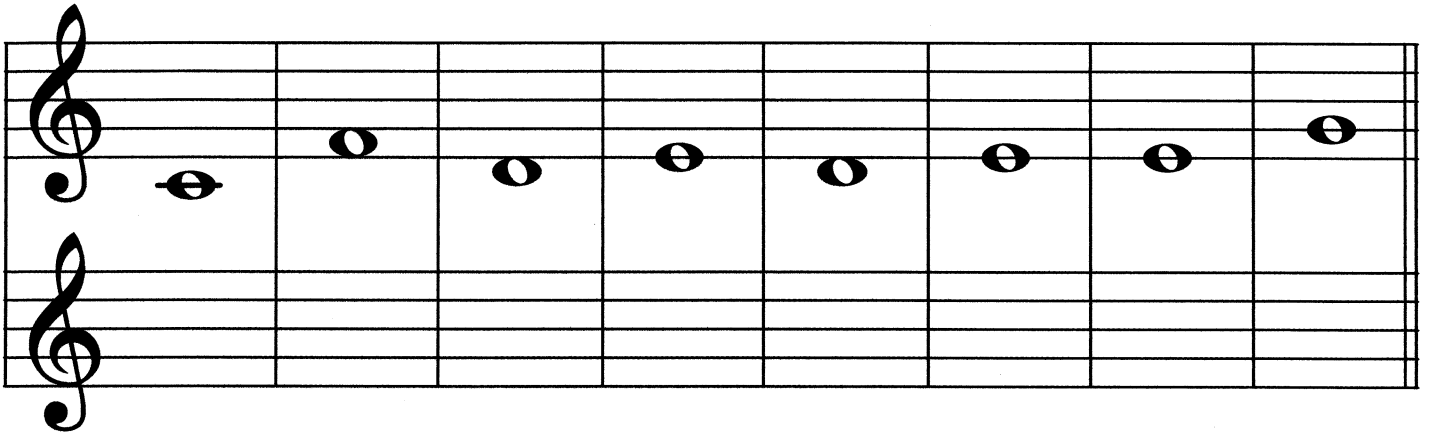
EML 1 Klavier

Setze die fehlenden Taktstriche ein!



Übung 15

Schreibe diese Noten ab!



A musical exercise consisting of two staves. The top staff is a treble clef with a series of eight notes: G4, A4, B4, C5, B4, A4, G4, and F4. The bottom staff is a treble clef and is empty for transcription.

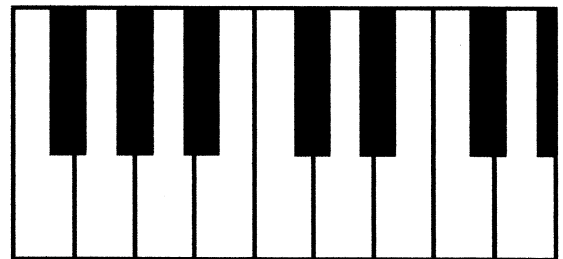
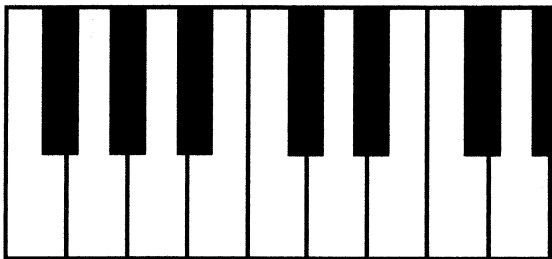
Kennzeichne folgende Noten auf den Klaviertasten!



A musical exercise showing two staves. The top staff is a treble clef with a single note on the second line (F4). The bottom staff is a bass clef with a single note on the second space (F3).



A musical exercise showing two staves. The top staff is a treble clef with a single note on the second space (F4). The bottom staff is a bass clef with a single note on the second space (F3).



Zeichne die fehlenden Notenhäuse ein!



A musical exercise on a single treble clef staff. It contains a sequence of nine notes: G4, A4, B4, C5, B4, A4, G4, F4, and E4. Each note is shown as an open circle without a stem or flag.

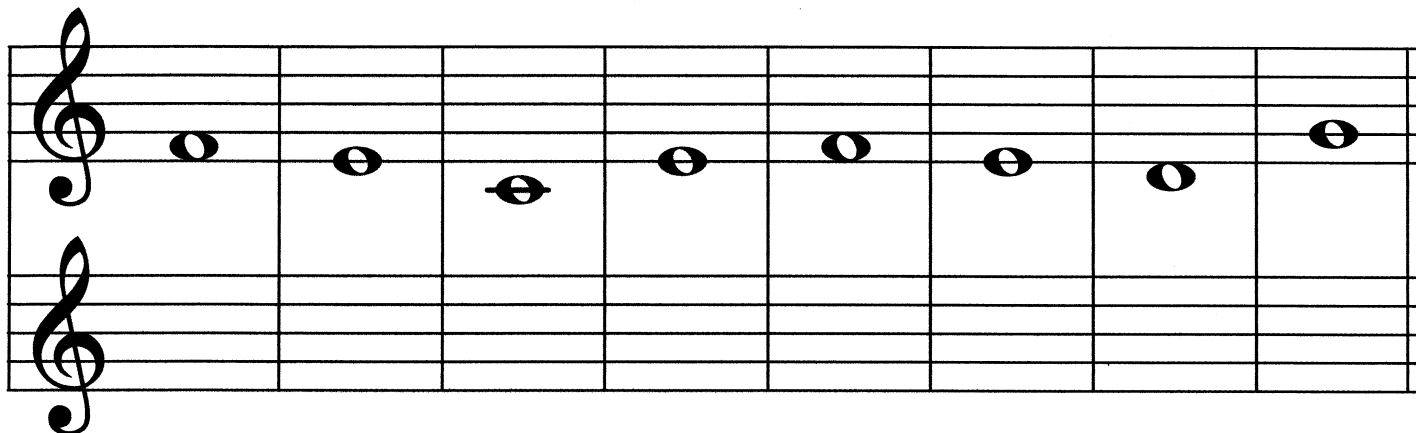
Setze die fehlenden Taktstriche ein!



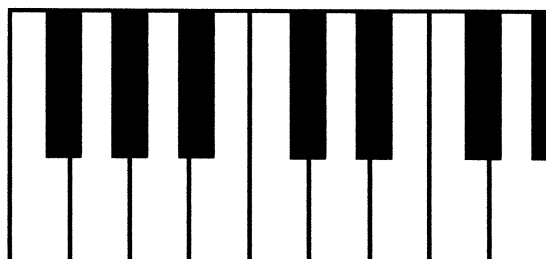
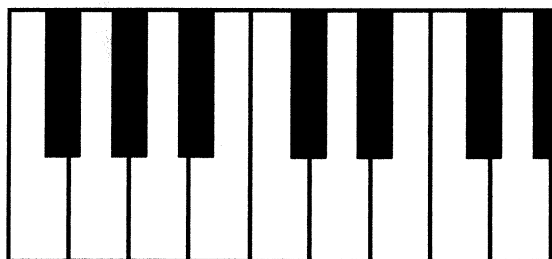
A musical exercise on a single treble clef staff. The time signature is 4/4. The staff contains a sequence of nine notes: G4, A4, B4, C5, B4, A4, G4, F4, and E4. The notes are quarter notes. The first bar line is present after the first note, and the final bar line is present after the last note. There are four empty spaces between the notes where bar lines should be placed.

Übung 16

Schreibe diese Noten ab!



Kennzeichne folgende Noten auf den Klaviertasten!



Zeichne die fehlenden Notenhäuse ein!



Setze die fehlenden Taktstriche ein!



Übung 17

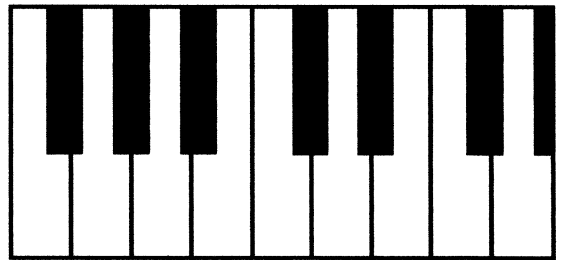
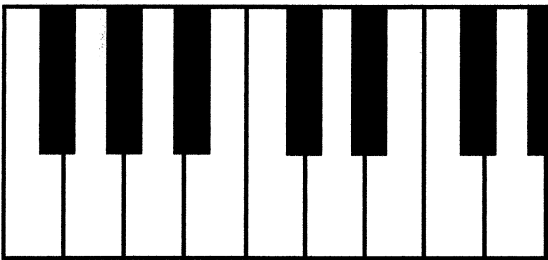
Schreibe diese Noten ab!

Two staves of musical notation. The top staff contains a sequence of eight notes: G4, F4, E4, D4, C4, B3, A3, and G3. The bottom staff is empty for transcription.

Kennzeichne folgende Noten auf den Klaviertasten!

Two staves of musical notation. The top staff has a single note on the second line (F4). The bottom staff has a single note on the second space (C4).

Two staves of musical notation. The top staff has a single note on the second space (C4). The bottom staff has a single note on the second line (F4).



Zeichne die fehlenden Notenhäule ein!

A single staff of musical notation with a treble clef. It contains a sequence of notes: G4, A4, B4, C5, B4, A4, G4, F4, E4, D4, C4. The notes are drawn without stems, and the student is to complete them.

Setze die fehlenden Taktstriche ein!

A single staff of musical notation with a treble clef and a 4/4 time signature. It contains a sequence of notes: G4, A4, B4, C5, B4, A4, G4, F4, E4, D4, C4. The notes are drawn without stems, and the student is to complete the bar lines.

Gehörbildung Rhythmus

EML 1 Klavier

Kreuze den richtigen Rhythmus an!



Kreuze den richtigen Rhythmus an!



Gehörbildung Rhythmus

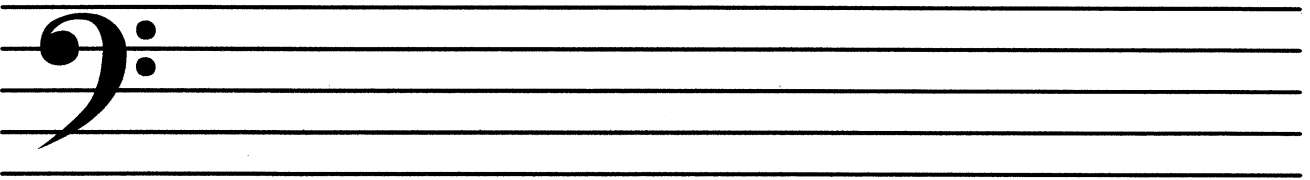
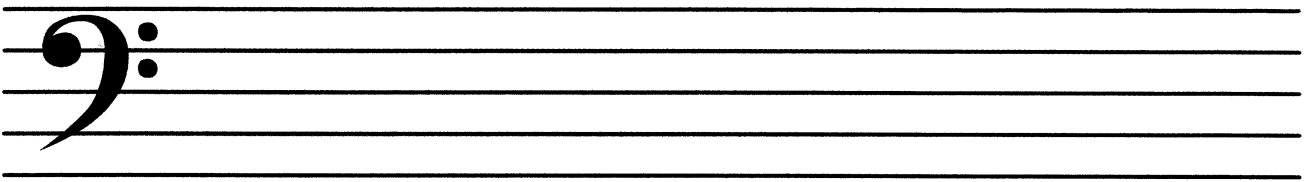
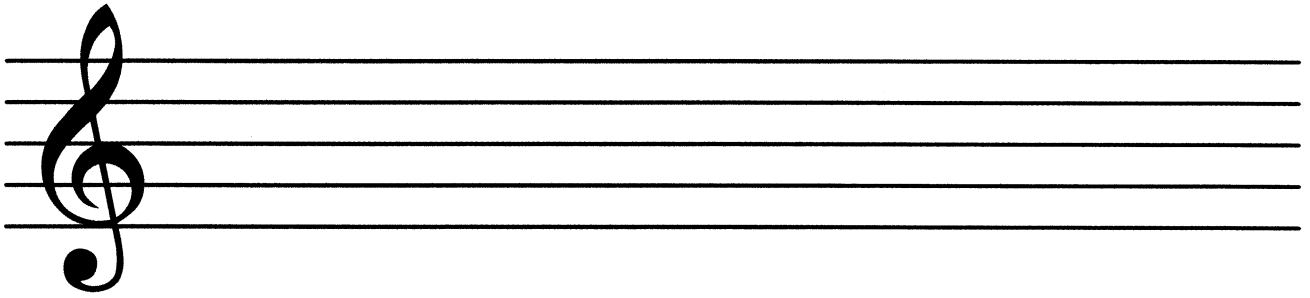
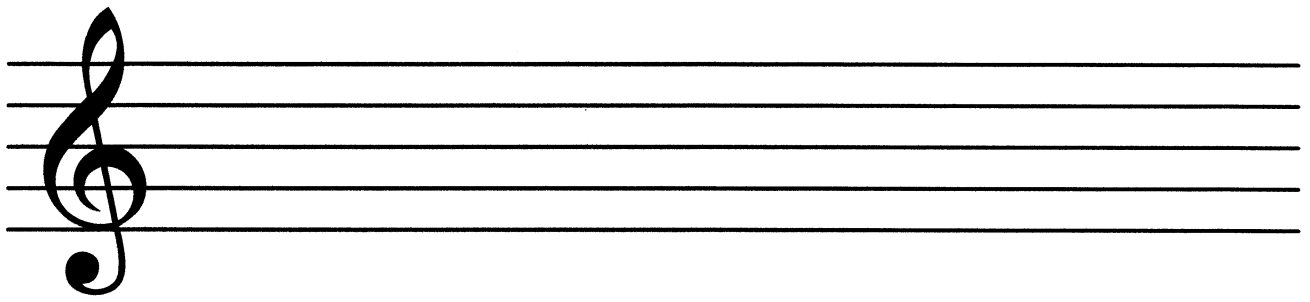
EML 1 Klavier

Kreuze den richtigen Rhythmus an!



Kreuze den richtigen Rhythmus an!





Übungstest

Elementare Musiklehre 1

Klavier

Name: _____

1. Stelle fest, ob der jeweils 2. Ton höher oder tiefer ist als der erste!

Beispiel 1: höher tiefer

Beispiel 2: höher tiefer

2 mögliche Punkte

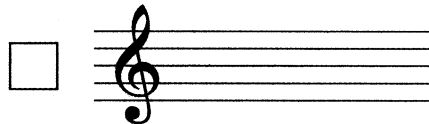
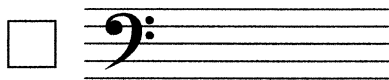
2. Stelle fest, ob der jeweils 2. Ton länger oder kürzer ist als der erste!

Beispiel 1: länger kürzer

Beispiel 2: länger kürzer

2 mögliche Punkte

3. Kreuze an, welcher Schlüssel der Violinschlüssel ist!

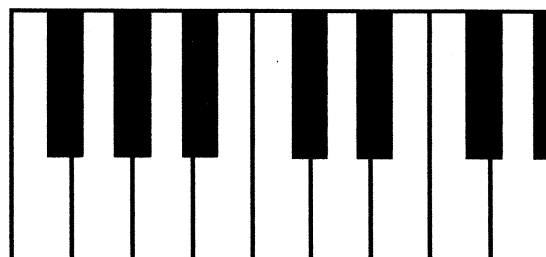
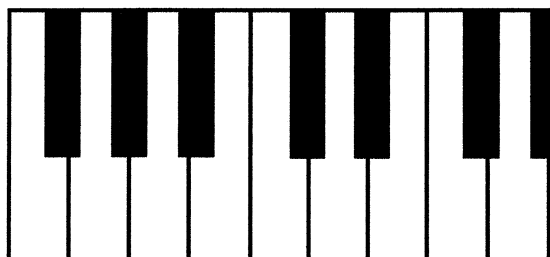


1 möglicher Punkt

4. Schreibe diese Noten ab!

4 mögliche Punkte

5. Kennzeichne folgende Noten auf den Klaviertasten!



4 mögliche Punkte

6. Zeichne die fehlenden Notenhäuse ein!



5 mögliche Punkte

7. Setze die fehlenden Taktstriche ein!



4 mögliche Punkte

8. Kreuze den richtigen Rhythmus an!



1 möglicher Punkt

23 - 20 Punkte sehr gut
 19 - 17 Punkte gut
 16 - 14 Punkte befriedigend
 13 - 12 Punkte genügend
 11 - 0 Punkte nicht genügend

Gesamtpunkte

Beurteilung