

# Elementare Musiklehre 1

## Violine

### Lehrstoff und Übungen

#### 1./2. Gehörbildung:

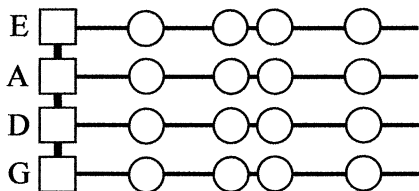
Tonhöhe

Tondauer

#### 3. Notenschlüssel

#### 4. Noten schreiben

#### 5. Noten und Griffbrett



#### 7. Notenwerte / Taktstriche



#### 8. Rhythmus hören

EML 1 Alter: ca. 5 - 7 Jahre

Der Lehrstoff für die EML ist bewusst einfach gehalten und verzichtet auf erklärende Texte, besteht vorwiegend aus Übungen und soll den ersten Umgang mit dem Notenlesen und der Notenschrift vermitteln. Die Übungen können begleitend zu einem Musiktheoriekurs, aber auch von den InstrumentallehrerInnen ergänzend im Hauptfachunterricht verwendet werden.

Da die EML nicht aufbauend konzipiert ist, kann je nach Instrument, Alter und geistiger Reife in jede Stufe eingestiegen werden.

# Übungen zur Gehörbildung

Stelle fest, ob der jeweils 2. Ton höher oder tiefer ist als der erste!

Beispiel 1:  höher  tiefer

Beispiel 2:  höher  tiefer

Stelle fest, ob der jeweils 2. Ton länger oder kürzer ist als der erste!

Beispiel 1:  länger  kürzer

Beispiel 2:  länger  kürzer

# Übungen zur Gehörbildung

Stelle fest, ob der jeweils 2. Ton höher oder tiefer ist als der erste!

Beispiel 1:  höher  tiefer

Beispiel 2:  höher  tiefer

Stelle fest, ob der jeweils 2. Ton länger oder kürzer ist als der erste!

Beispiel 1:  länger  kürzer

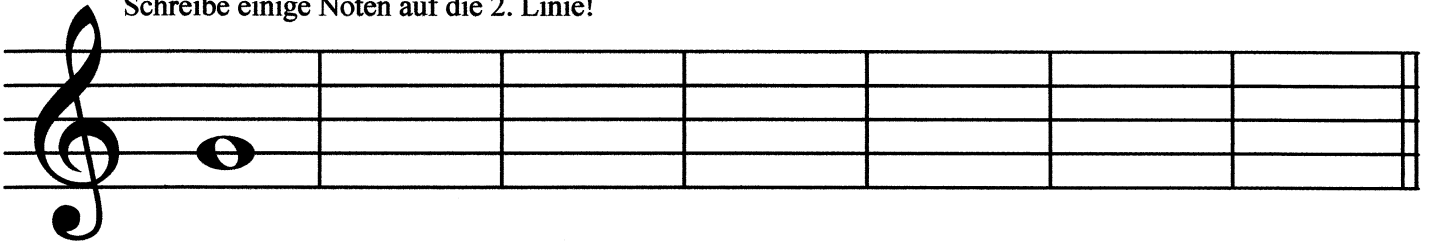
Beispiel 2:  länger  kürzer

# Notenkunde

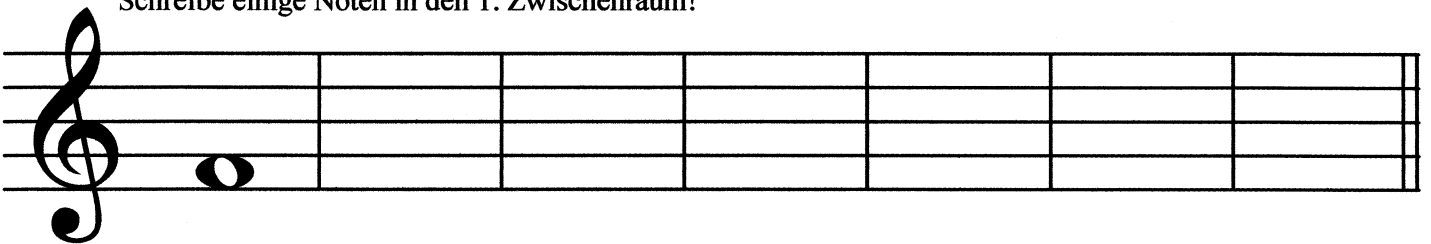


## Violinschlüssel

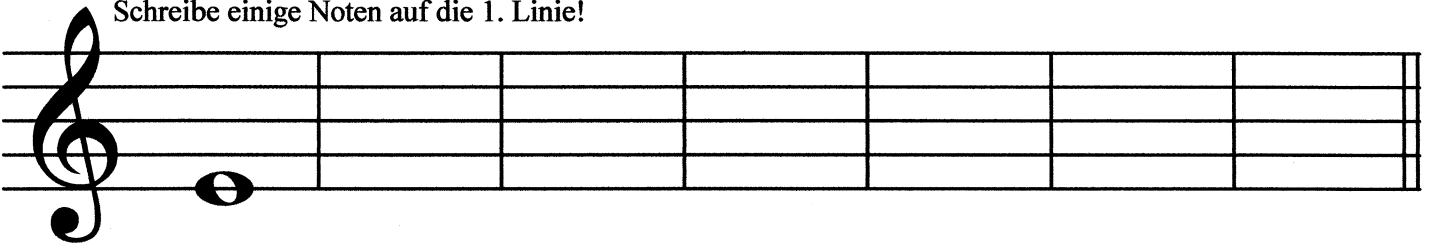
Schreibe einige Noten auf die 2. Linie!



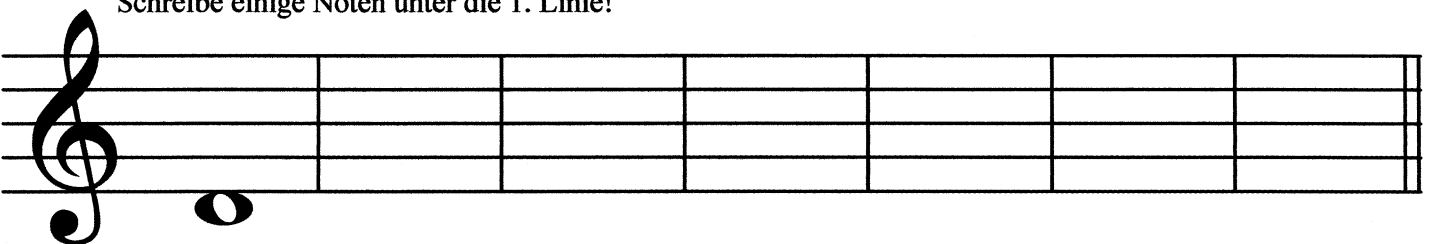
Schreibe einige Noten in den 1. Zwischenraum!



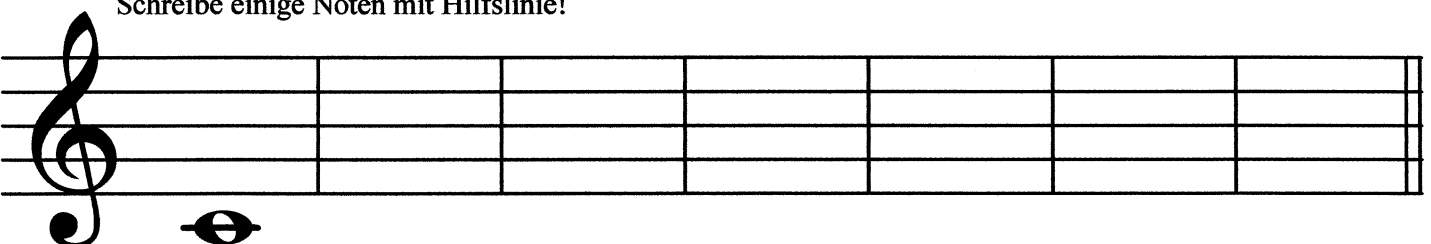
Schreibe einige Noten auf die 1. Linie!



Schreibe einige Noten unter die 1. Linie!



Schreibe einige Noten mit Hilfslinie!



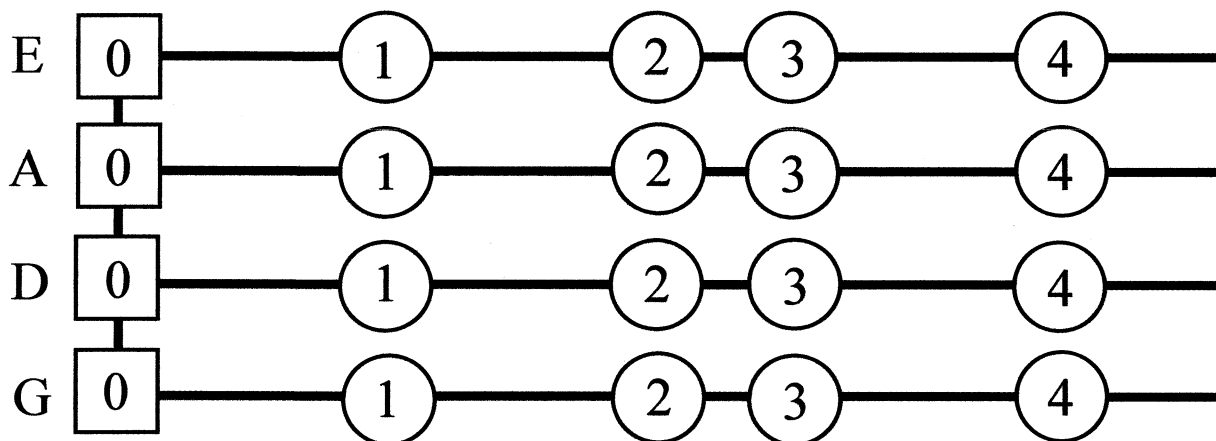
Schreibe diese Noten ab!

A musical staff with a treble clef and a key signature of one sharp (F#). The staff contains eight measures, each with a single half note. The notes are: G4 (first line), A4 (first space), B4 (second line), C5 (second space), D5 (third line), E5 (third space), F5 (fourth line), and G5 (fourth space).

A musical staff with a treble clef and a key signature of one sharp (F#). The staff contains eight measures, each with a single half note. The notes are: A4 (first space), B4 (second line), C5 (second space), D5 (third line), E5 (third space), F5 (fourth line), G5 (fourth space), and A5 (fifth line).

A musical staff with a treble clef and a key signature of one sharp (F#). The staff contains eight measures, each with a single half note. The notes are: B4 (second line), C5 (second space), D5 (third line), E5 (third space), F5 (fourth line), G5 (fourth space), A5 (fifth line), and B5 (fifth space).

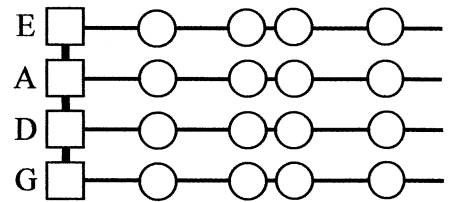
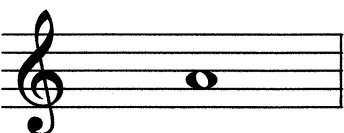
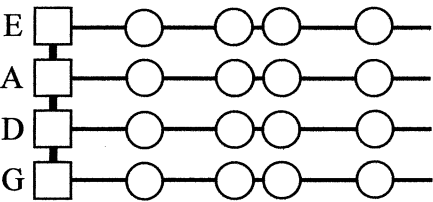
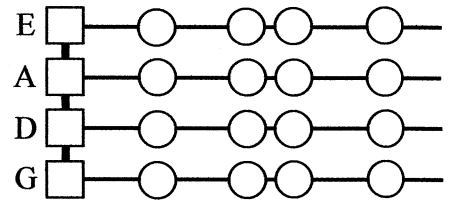
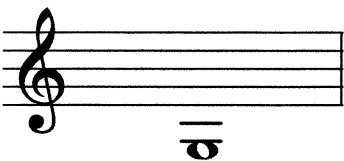
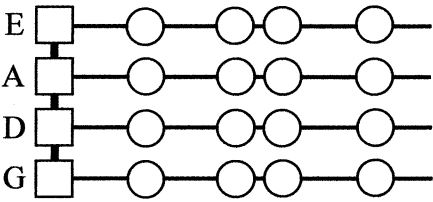
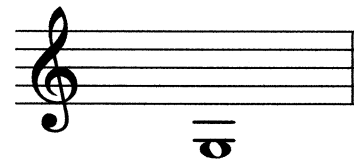
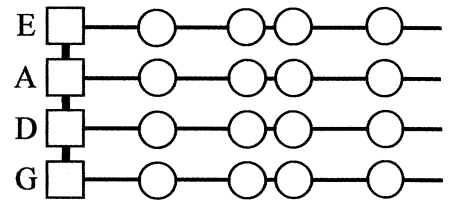
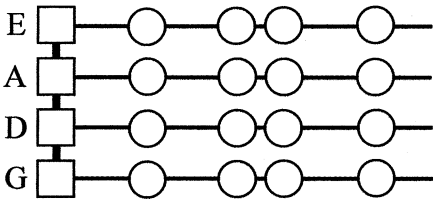
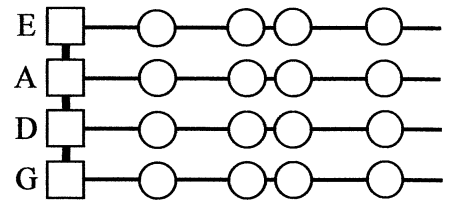
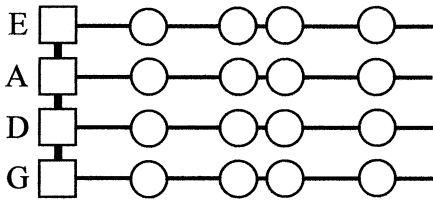
# Noten und Griffbrett



Four musical staves showing the notes E, F#, G, A, and B. The first staff (E string) shows notes on the 1st, 2nd, 3rd, and 4th lines. The second staff (A string) shows notes on the 1st, 2nd, 3rd, and 4th lines. The third staff (D string) shows notes on the 1st, 2nd, 3rd, and 4th lines. The fourth staff (G string) shows notes on the 1st, 2nd, 3rd, and 4th lines. The notes are: E (open), F# (1st fret), G (2nd fret), A (3rd fret), and B (4th fret).

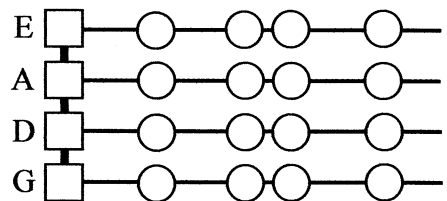
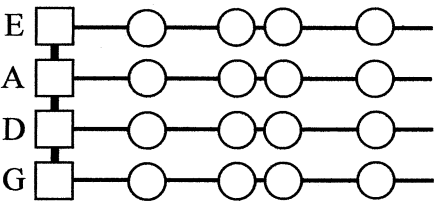
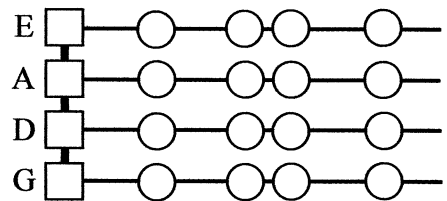
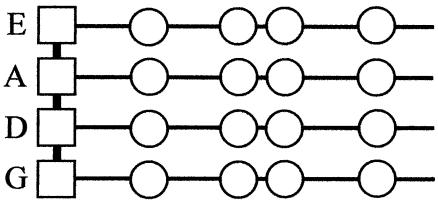
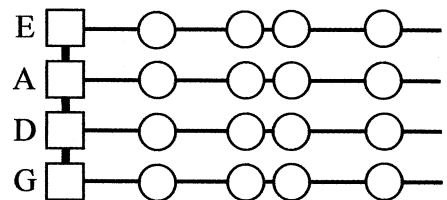
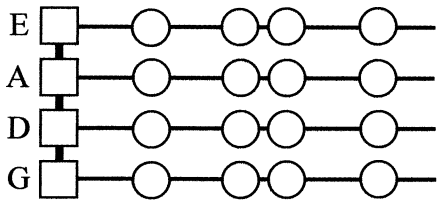
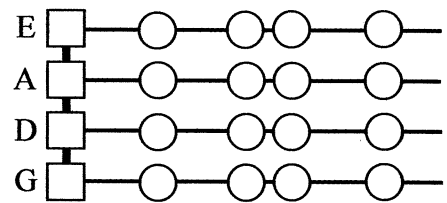
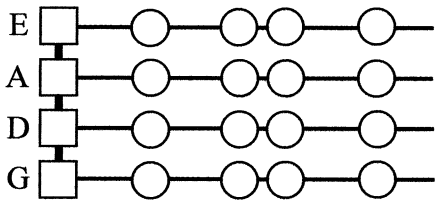
# Übung 1

Kennzeichne folgende Noten auf dem Griffbrett!



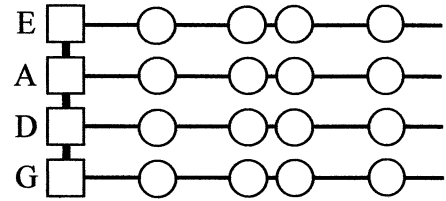
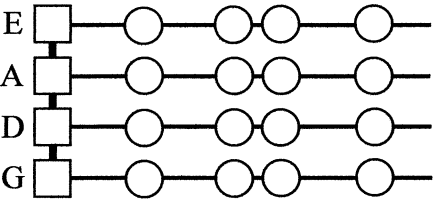
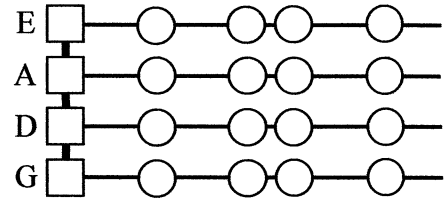
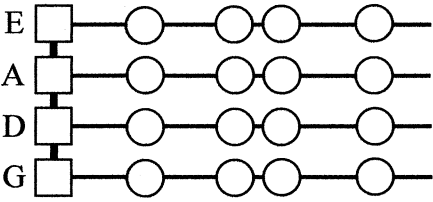
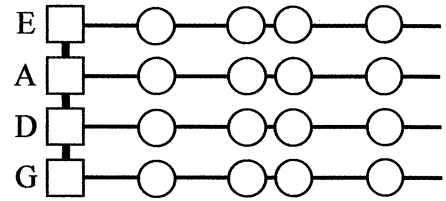
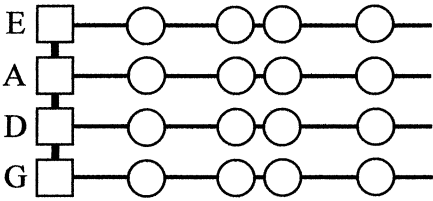
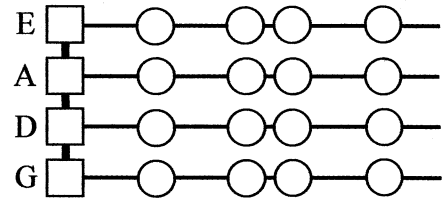
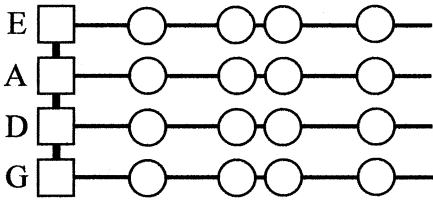
# Übung 2

Kennzeichne folgende Noten auf dem Griffbrett!



# Übung 3

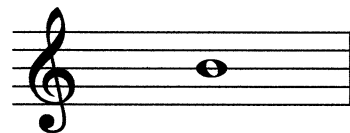
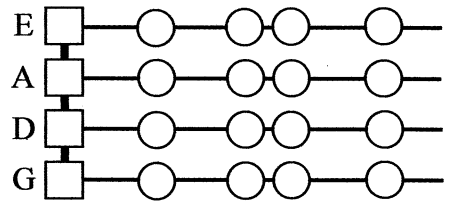
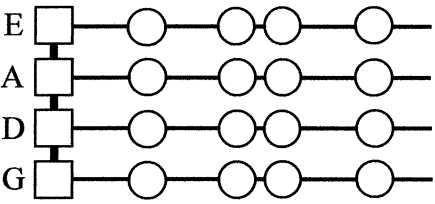
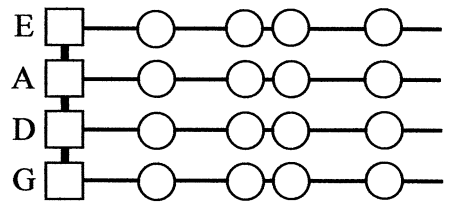
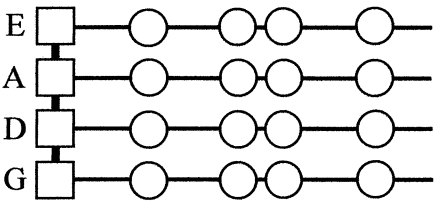
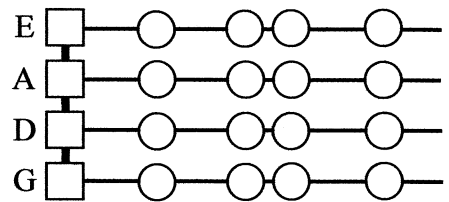
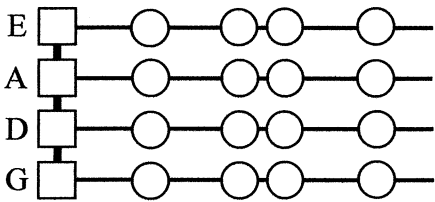
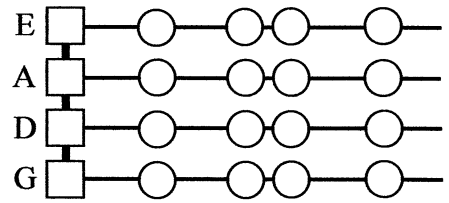
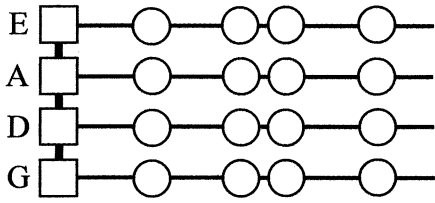
Kennzeichne folgende Noten auf dem Griffbrett!





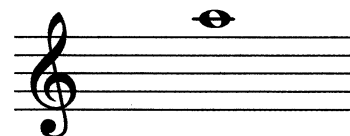
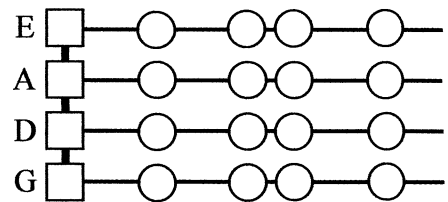
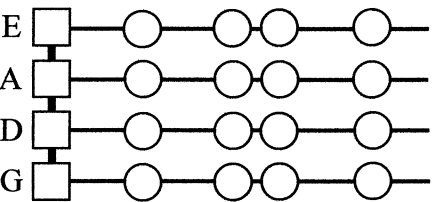
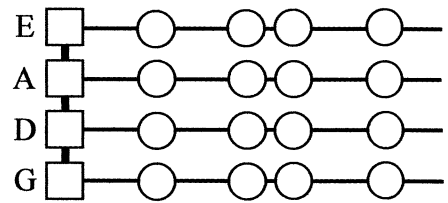
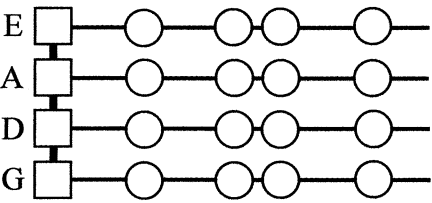
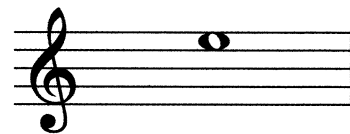
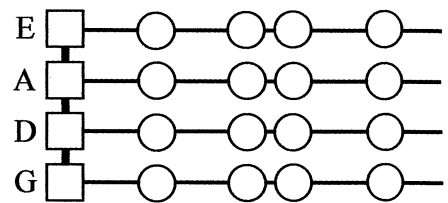
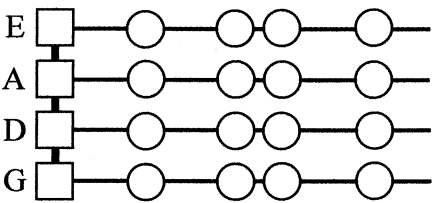
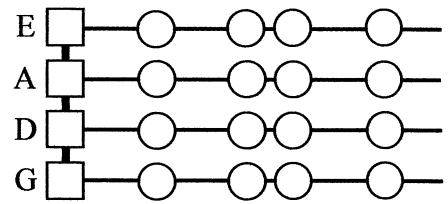
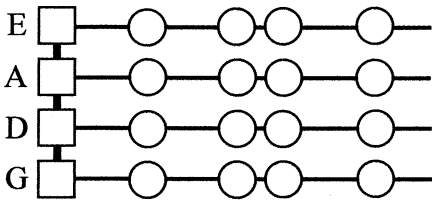
# Übung 4

Kennzeichne folgende Noten auf dem Griffbrett!



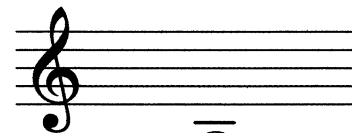
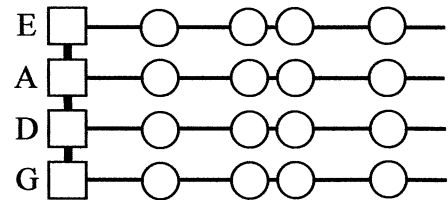
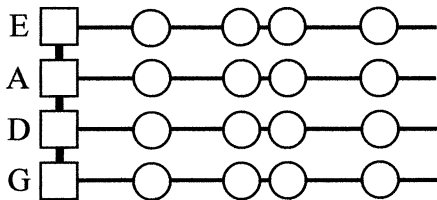
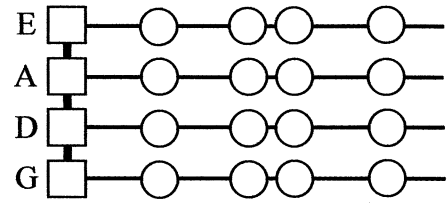
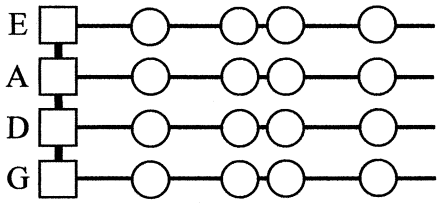
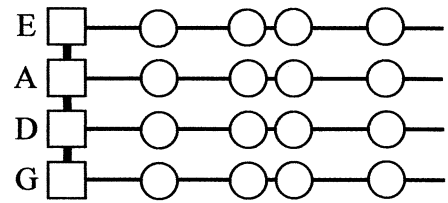
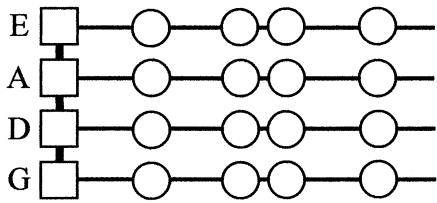
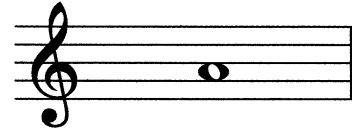
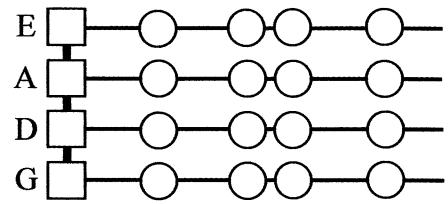
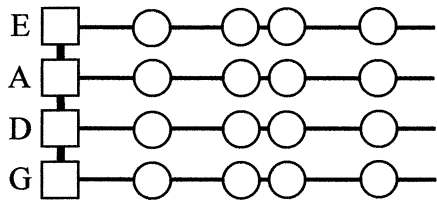
# Übung 5

Kennzeichne folgende Noten auf dem Griffbrett!



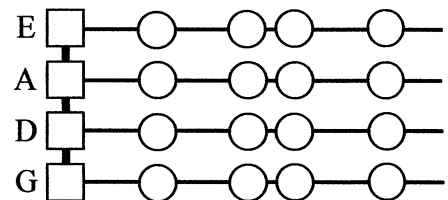
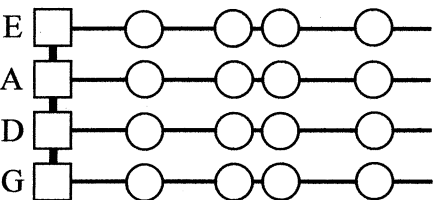
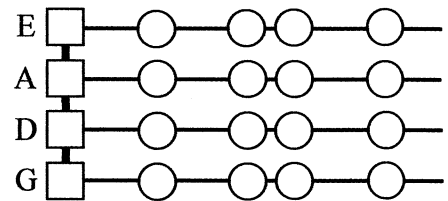
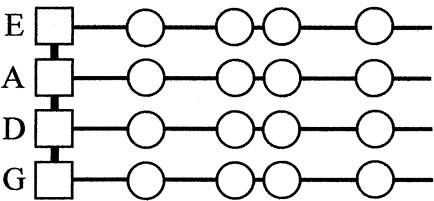
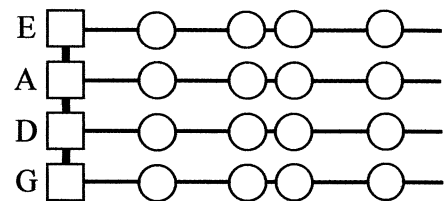
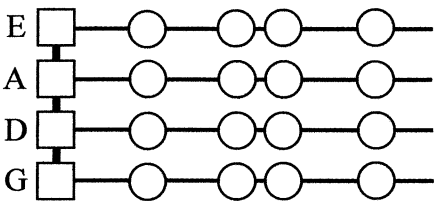
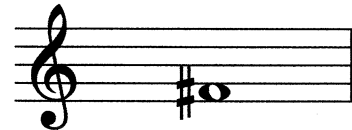
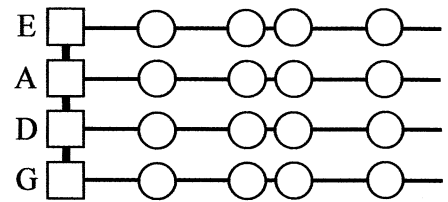
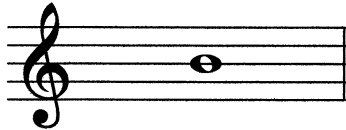
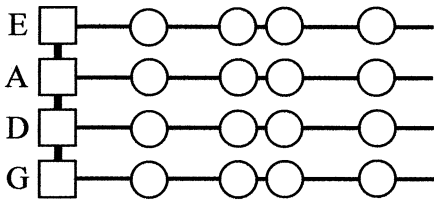
# Übung 6

Kennzeichne folgende Noten auf dem Griffbrett!



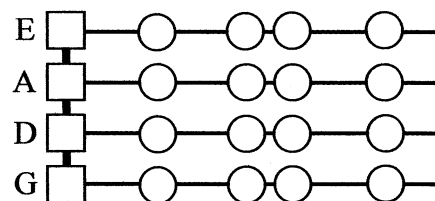
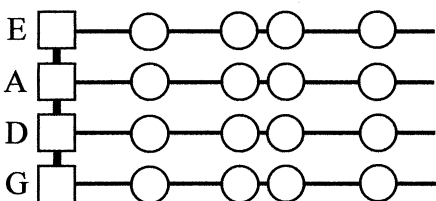
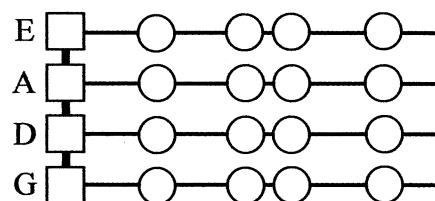
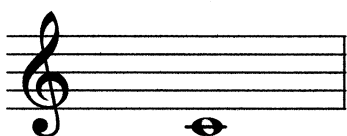
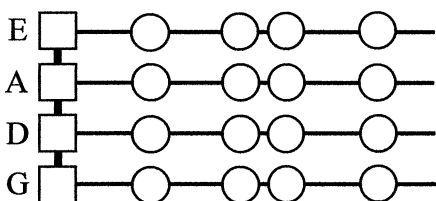
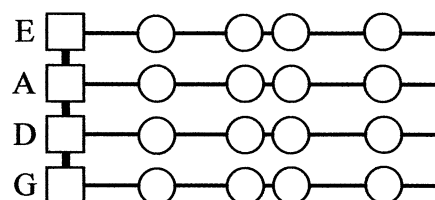
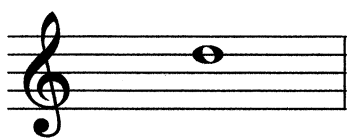
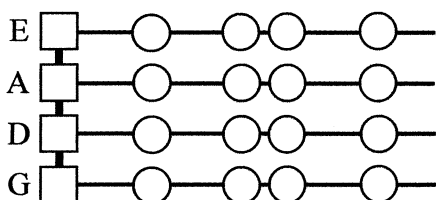
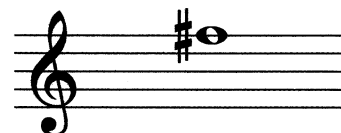
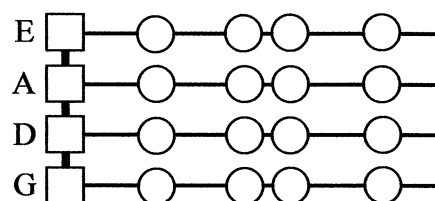
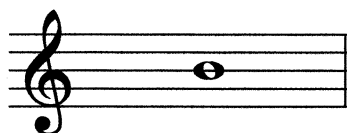
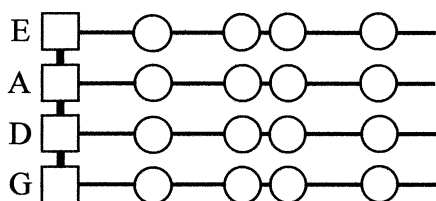
# Übung 7

Kennzeichne folgende Noten auf dem Griffbrett!



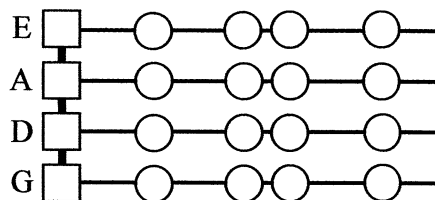
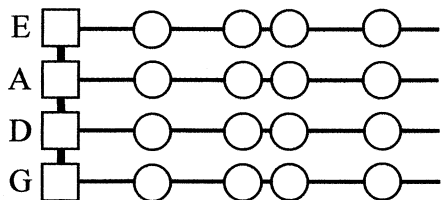
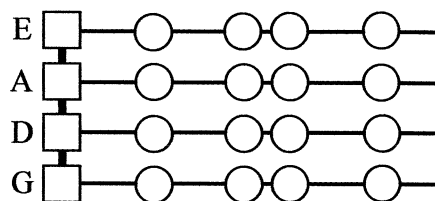
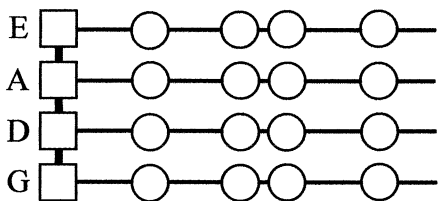
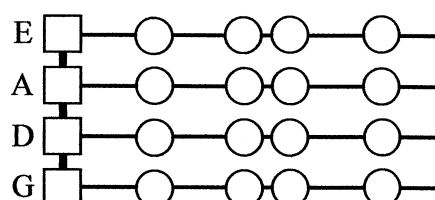
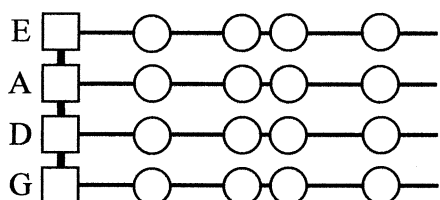
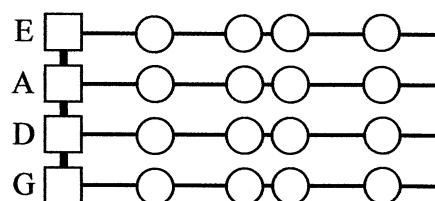
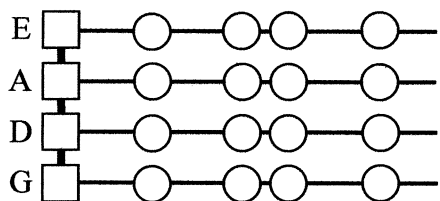
# Übung 8

Kennzeichne folgende Noten auf dem Griffbrett!



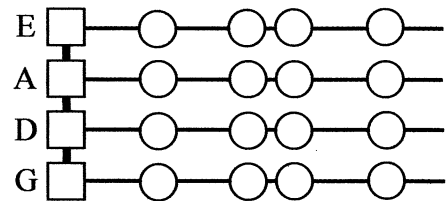
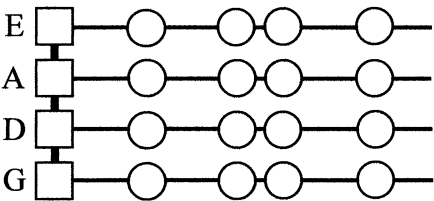
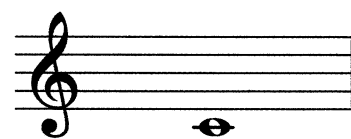
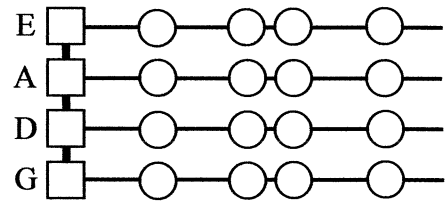
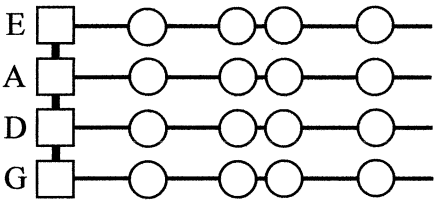
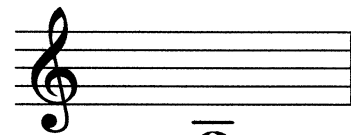
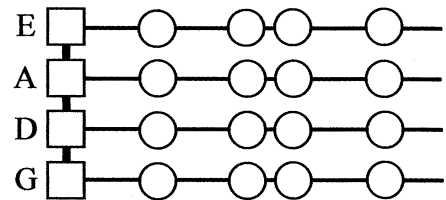
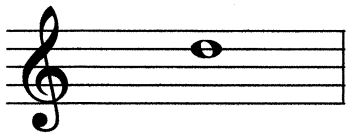
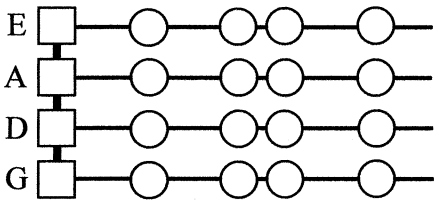
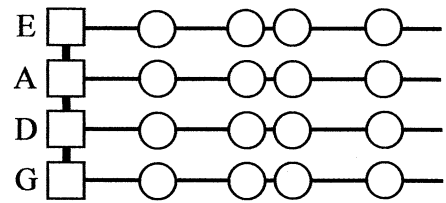
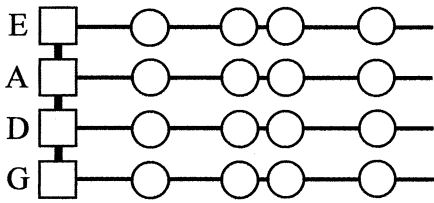
# Übung 9

Kennzeichne folgende Noten auf dem Griffbrett!



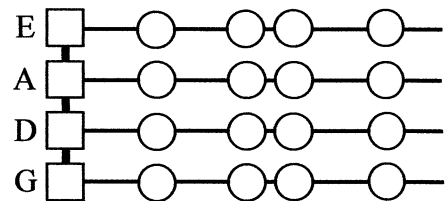
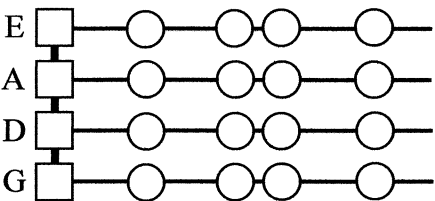
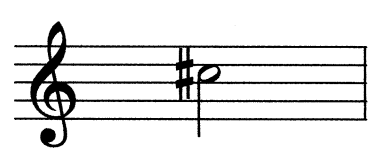
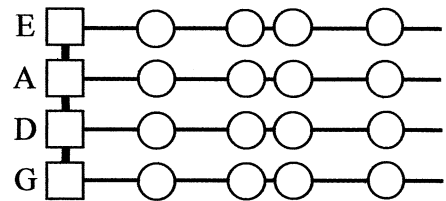
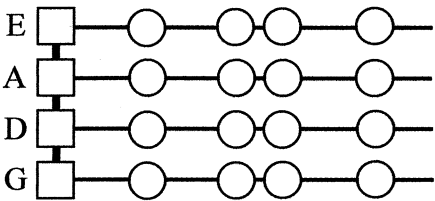
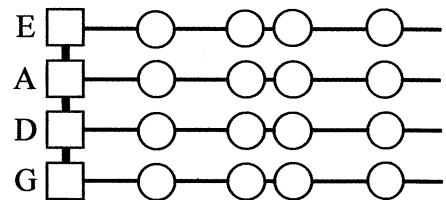
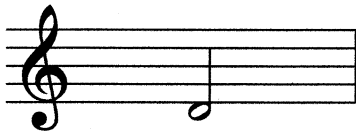
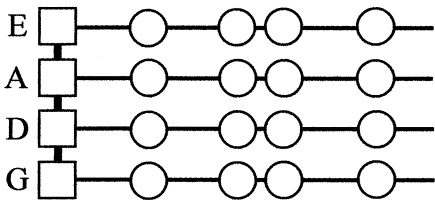
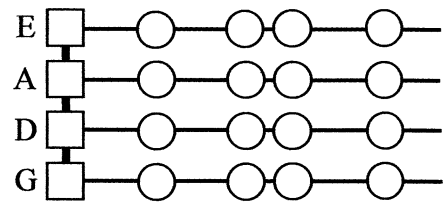
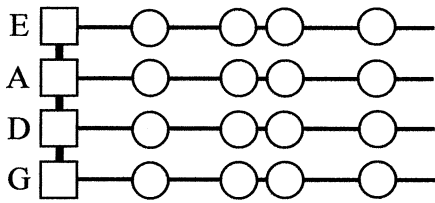
# Übung 10

Kennzeichne folgende Noten auf dem Griffbrett!



# Übung 11

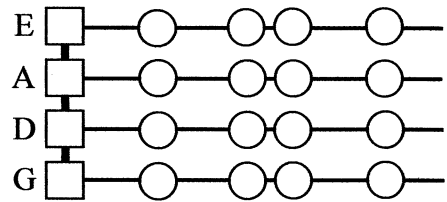
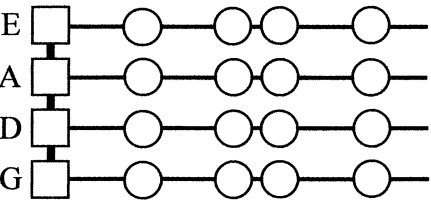
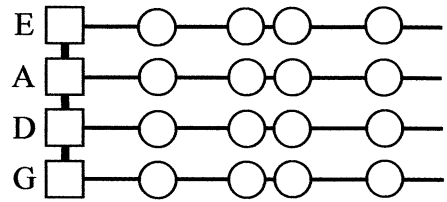
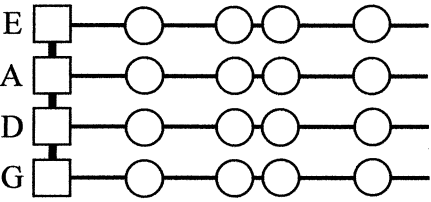
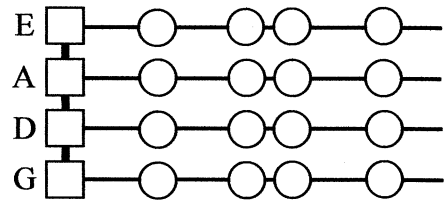
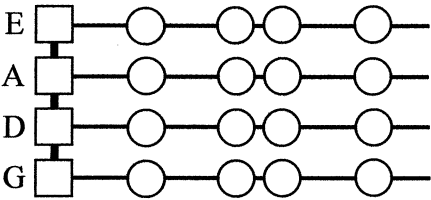
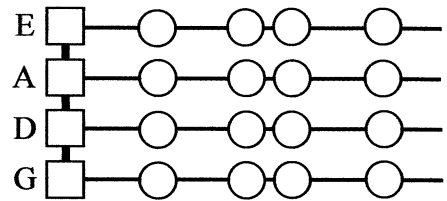
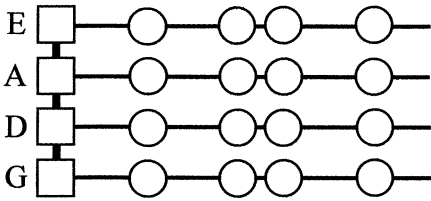
Kennzeichne folgende Noten auf dem Griffbrett!





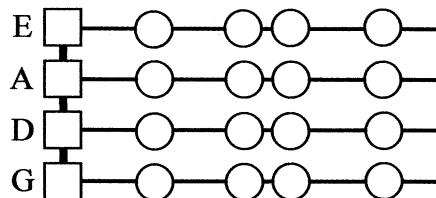
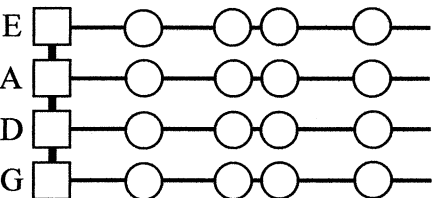
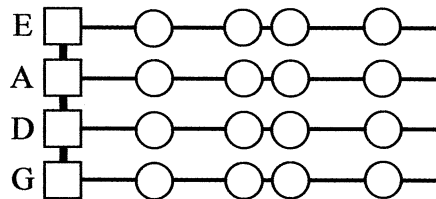
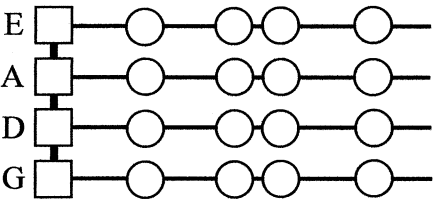
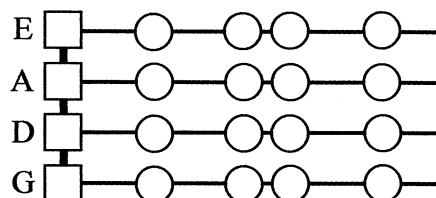
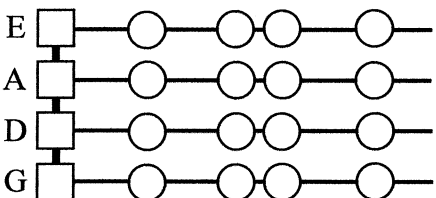
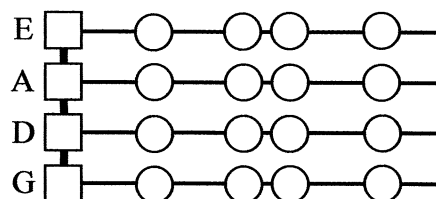
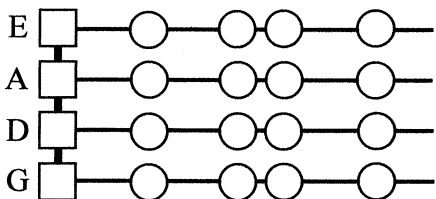
# Übung 12

Kennzeichne folgende Noten auf dem Griffbrett!



# Übung 13

Kennzeichne folgende Noten auf dem Griffbrett!

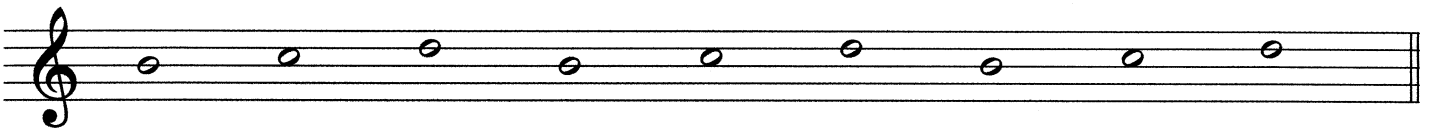
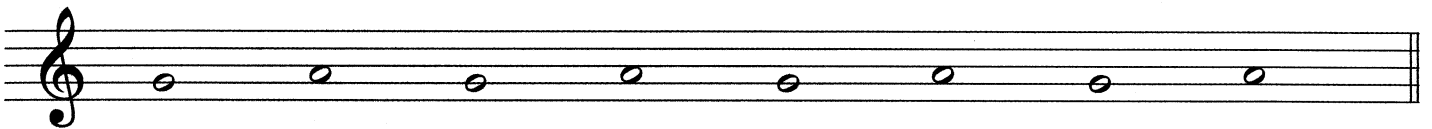


# Notenhäse

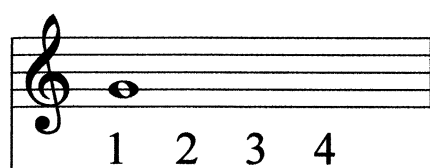


## Übung 14


Zeichne die fehlenden Notenhäse ein!




# Notenwerte



Ganze Note (4 Schläge)




Halbe Note (2 Schläge)



Viertel Note (1 Schlag)

# Taktstriche



# Übung 15

Setze die fehlenden Taktstriche ein!



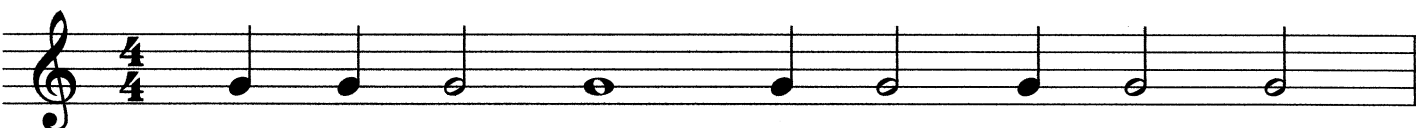

# Übung 16

Setze die fehlenden Taktstriche ein!



# Übung 17

Setze die fehlenden Taktstriche ein!



# Übung 18

Schreibe diese Noten ab!

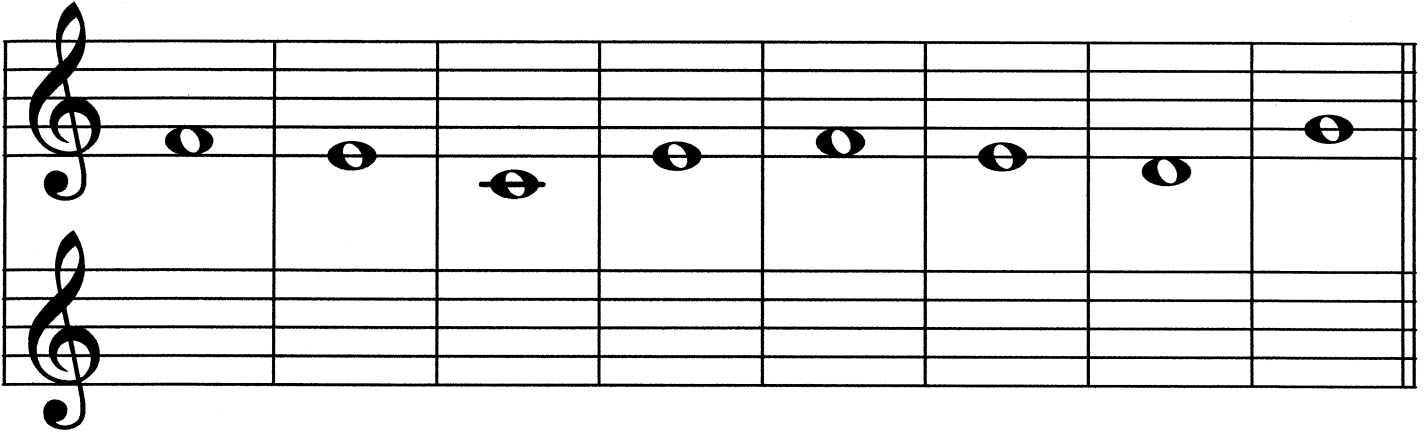
Kennzeichne folgende Noten auf dem Griffbrett!

Zeichne die fehlenden Notenhäuse ein!

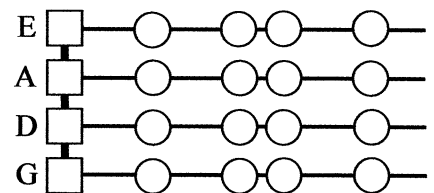
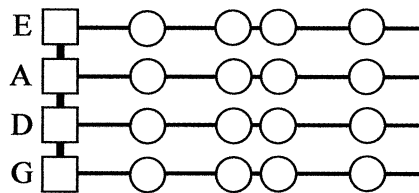
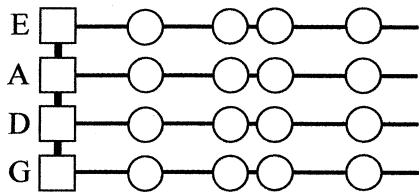
Setze die fehlenden Taktstriche ein!

# Übung 19

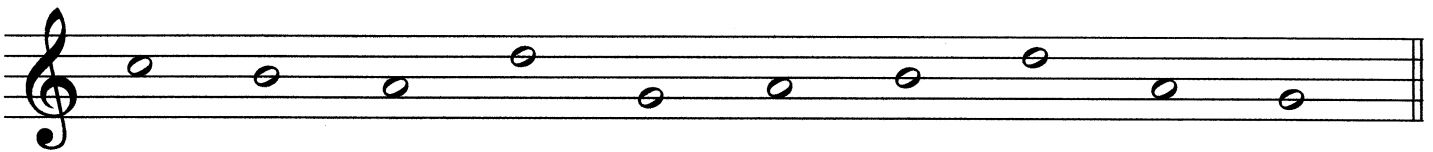
Schreibe diese Noten ab!



Kennzeichne folgende Noten auf dem Griffbrett!



Zeichne die fehlenden Notenhäuse ein!



Setze die fehlenden Taktstriche ein!



# Übung 20

Schreibe diese Noten ab!

Two staves of musical notation. The top staff contains a sequence of notes: a half note G4, a half note F4, a half note E4, a half note D4, a half note C4, a half note B3, a half note A3, and a half note G3. The bottom staff is empty for transcription.

Kennzeichne folgende Noten auf dem Griffbrett!

Fingering diagram for the note E4 (open string). The strings are labeled E, A, D, G from top to bottom. The E string has an open circle representing the note.

Fingering diagram for the note F4 (first fret, E string). The E string has a square representing the first fret and a circle representing the note.

Fingering diagram for the note G4 (second fret, E string). The E string has a square representing the second fret and a circle representing the note.

Musical notation for the note E4 (open string) on a treble clef staff.

Musical notation for the note F4 (first fret, E string) on a treble clef staff.

Musical notation for the note G4 (second fret, E string) on a treble clef staff.

Zeichne die fehlenden Notenhäuse ein!

A single staff of musical notation with a treble clef. It contains a sequence of notes: G4, A4, B4, C5, B4, A4, G4, F4, E4. The notes are drawn without stems or beams, only as circles.

Setze die fehlenden Taktstriche ein!

A single staff of musical notation with a treble clef and a 4/4 time signature. It contains a sequence of notes: G4, A4, B4, C5, B4, A4, G4, F4, E4. The notes are drawn without stems or beams, only as circles. The bar lines are missing.



# Gehörbildung Rhythmus

Kreuze den richtigen Rhythmus an!



Kreuze den richtigen Rhythmus an!



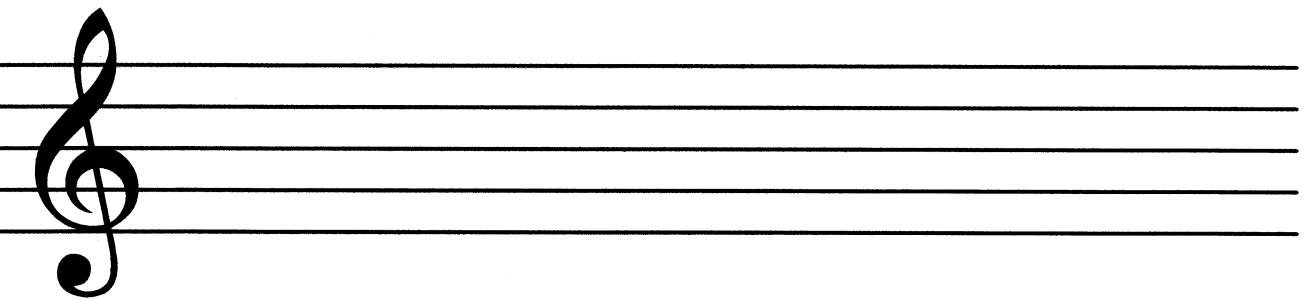
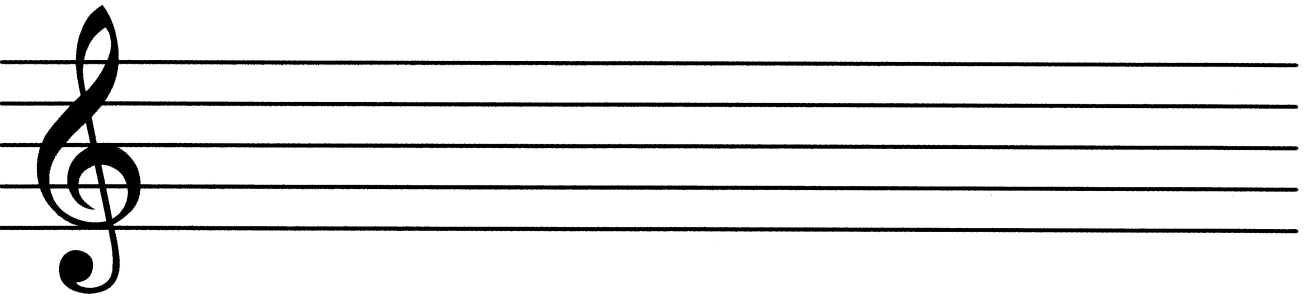
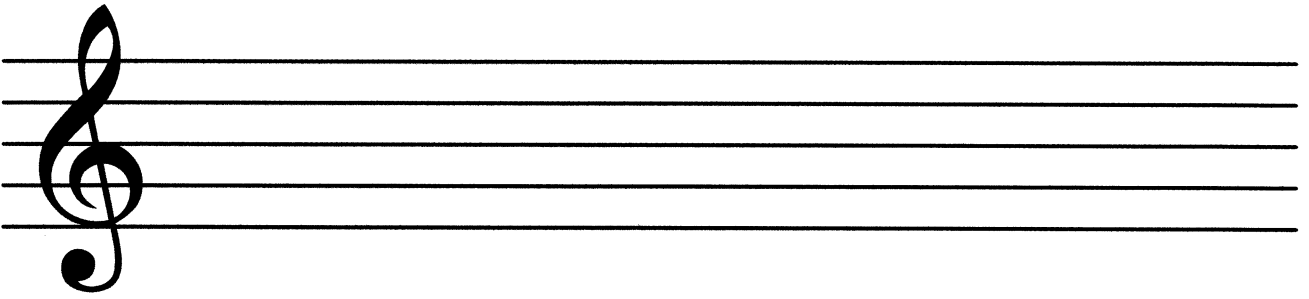
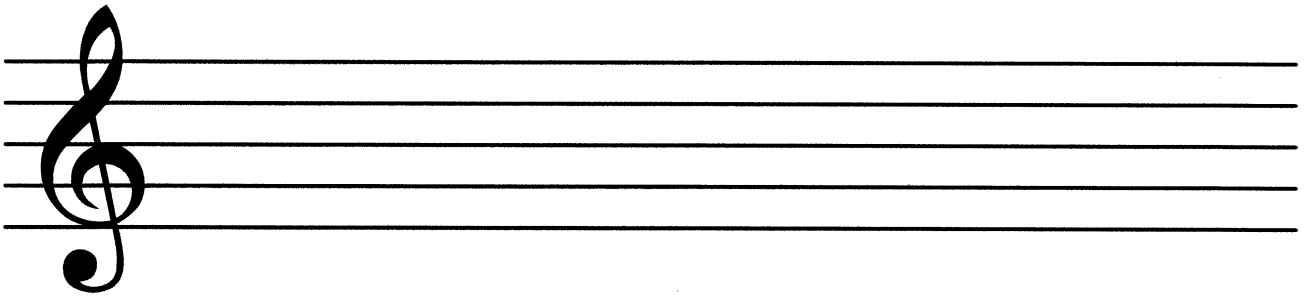
# Gehörbildung Rhythmus

Kreuze den richtigen Rhythmus an!



Kreuze den richtigen Rhythmus an!





# Übungstest

## Elementare Musiklehre 1

Violine

Name: \_\_\_\_\_

1. Stelle fest, ob der jeweils 2. Ton höher oder tiefer ist als der erste!

Beispiel 1:     höher     tiefer

Beispiel 2:     höher     tiefer

2 mögliche Punkte

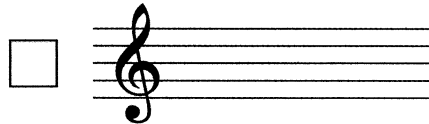
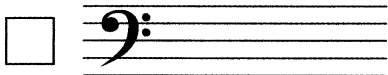
2. Stelle fest, ob der jeweils 2. Ton länger oder kürzer ist als der erste!

Beispiel 1:     länger     kürzer

Beispiel 2:     länger     kürzer

2 mögliche Punkte

3. Kreuze an, welcher Schlüssel der Violinschlüssel ist!

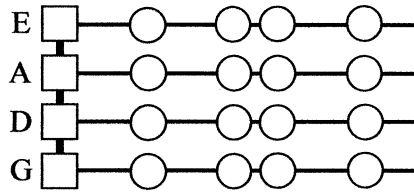
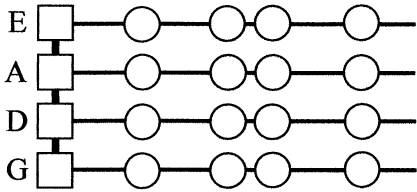
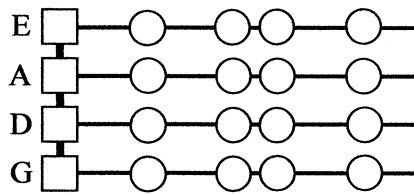
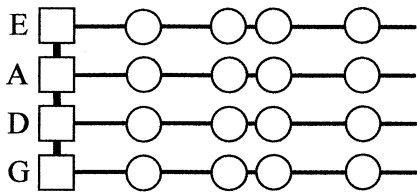


1 möglicher Punkt

4. Schreibe diese Noten ab!

4 mögliche Punkte

**5. Kennzeichne folgende Noten auf dem Griffbrett!**



4 mögliche Punkte

**6. Zeichne die fehlenden Notenhäuse ein!**



5 mögliche Punkte

**7. Setze die fehlenden Taktstriche ein!**



4 mögliche Punkte

**8. Kreuze den richtigen Rhythmus an!**



1 möglicher Punkt

23 - 20 Punkte sehr gut  
19 - 17 Punkte gut  
16 - 14 Punkte befriedigend  
13 - 12 Punkte genügend  
11 - 0 Punkte nicht genügend

Gesamtpunkte

Beurteilung